



# **ORDER A80 7110.65E**

## **Standard Operating Procedures**

**JUNE 1, 2020**

## Table of Contents

Chapter 1. General.....	5
Section 1. Introduction .....	5
1-1-1.    PURPOSE.....	5
1-1-2.    DISTRIBUTION .....	5
1-1-3.    CANCELLATION .....	5
1-1-4.    EFFECTIVE DATE.....	5
1-1-5.    GENERAL AIRSPACE .....	5
Section 2. General Operating Procedures .....	7
1-2-1.    TRAFFIC MANAGEMENT .....	7
1-2-2.    AIRSPACE JURISDICTION .....	7
1-2-3.    CLASS B / TRSA AIRSPACE .....	8
1-2-4.    PREARRANGED COORDINATION PROCEDURES (P-ACP) .....	8
1-2-5.    AUTOMATED POINT-OUT PROCEDURES .....	10
Chapter 2. Terminal Arrival Radar (TAR).....	11
Section 1. Area of Jurisdiction .....	11
Section 2. Position Information .....	13
Section 3. Position Duties and Responsibilities .....	13
Section 4. Position Standard Operating Procedures .....	14
2-4-1.    MANAGING TAR TRAFFIC .....	14
2-4-2.    CONTROL TRANSFER BETWEEN TAR AND AR.....	14
2-4-3.    CONTROL TRANSFER BETWEEN TAR POSITIONS.....	15
Section 5. Potential Problem Areas .....	15
Chapter 3. Arrival Radar (AR).....	16
Section 1. Area of Jurisdiction .....	16
Section 2. Position Information .....	18
Section 3. Position Duties and Responsibilities .....	18
Section 4. Position Standard Operating Procedures .....	18
3-4-1.    SCRATCH PAD INFORMATION .....	18
3-4-2.    INTERCEPT OF THE FINAL APPROACH COURSE .....	19
3-4-3.    ARRIVALS TO TWO RUNWAYS (DUALS).....	19
3-4-4.    ARRIVALS TO THREE RUNWAYS (TRIPS) .....	20
3-4-5.    CONTROL TRANSFER.....	21

3-4-6.	TRANSFER OF COMMUNICATION/CONTROL BETWEEN TRACON AND TOWER .....	21
3-4-7.	GO-AROUND PROCEDURES .....	23
3-4-8.	BREAKOUT/BLUNDER PROCEDURES .....	23
3-4-9.	REDUCED SEPARATION ON FINAL .....	23
Section 5.	Potential Problem Areas .....	23
Chapter 4.	Departure Radar (DR).....	25
Section 1.	Area of Jurisdiction .....	25
Section 2.	Position Information .....	26
Section 3.	Position Duties and Responsibilities .....	27
Section 4.	Position Standard Operating Procedures .....	27
Section 5.	Potential Problem Areas .....	28
Chapter 5.	Satellite Radar (SAT).....	29
Section 1.	Area of Jurisdiction .....	29
Section 2.	Position Information .....	31
Section 3.	Position Duties and Responsibilities .....	31
Section 4.	Position Standard Operating Procedures .....	32
5-4-1.	DEPARTURES.....	32
5-4-2.	ARRIVALS .....	32
Section 5.	Potential Problem Areas .....	34
Chapter 6.	Columbus Sector (CSG) .....	35
Section 1.	Area of Jurisdiction .....	35
Section 2.	Position Information .....	36
Section 3.	Position Duties and Responsibilities .....	36
Section 4.	Position Standard Operating Procedures .....	36
6-4-1.	DEPARTURES.....	36
6-4-2.	ARRIVALS .....	36
6-4-3.	HARTSFIELD ATLANTA ARRIVALS.....	36
6-4-4.	ATLANTA AREA SATELLITE AIRPORT ARRIVALS .....	37
6-4-5.	ATLANTA AREA OVERFLIGHTS .....	37
6-4-6.	BENNING MOA.....	38
6-4-7.	MISCELLANEOUS.....	38
Section 5.	Potential Problem Areas .....	38
Chapter 7.	Macon Sector (MCN).....	39

Section 1. Area of Jurisdiction .....	39
Section 2. Position Information .....	40
Section 3. Position Duties and Responsibilities .....	40
Section 4. Standard Operating Procedures .....	40
7-4-1.    ARRIVALS .....	40
7-4-2.    HARTSFIELD ATLANTA ARRIVALS .....	40
7-4-3.    ATLANTA AREA SATELLITE AIRPORT ARRIVALS .....	41
7-4-4.    MISCELLANEOUS.....	41
7-4-5.    A80 ATHENS SECTOR ARRIVALS/OVERFLIGHTS.....	42
Section 5. Potential Problem Areas .....	42
Chapter 8. ATHENS Sector (AHN).....	43
Section 1. Area of Jurisdiction .....	43
Section 2. Position Information .....	44
Section 3. Position Duties and Responsibilities .....	44
Section 4. Position Standard Operating Procedures .....	44
8-4-1.    ARRIVALS .....	44
8-4-2.    ATL ARRIVALS.....	44
8-4-3.    A80 ATLANTA SATELLITE SECTOR ARRIVALS .....	45
8-4-4.    ATLANTA SECTOR OVERFLIGHTS .....	45
8-4-5.    A80 MACON SECTOR ARRIVALS/OVERFLIGHTS.....	45
8-4-6.    COORDINATION BETWEEN SAT AND AHN .....	45
Section 5. Potential Problem Areas .....	46
Appendix 1. Waiver 09-T-090: Simultaneous Visual Approaches to 9R/27L with 10/28 .....	47
Appendix 2. FAA JO 7110.126A: Consolidated Wake Turbulence Separation Standards (RECAT) 48	
1    AIRCRAFT WAKE CATEGORIES .....	48
2    WORDS AND PHRASES .....	50
3    DEPARTURE SAME/PARALLEL RUNWAY SEPARATION .....	50
4    INTERSECTION DEPARTURE SAME/PARALLEL RUNWAY SEPARATION.....	50
5    INTERSECTING RUNWAY/FLIGHT PATH & NONINTERSECTING CONVERGING RUNWAY SEPARATION.....	51
6    RADAR MINIMA .....	51
Appendix 3. Abbreviations/Acronyms/Identifiers.....	53

# Chapter 1. General

## Section 1. Introduction

### 1-1-1. PURPOSE

This Order establishes standard operating procedures for use by persons providing air traffic control services at Atlanta Large TRACON (A80) on the VATSIM network. This Order is designed to supplement national and regional directives.

### 1-1-2. DISTRIBUTION

This order applies to all vZTL Air Traffic Control Specialist and vZTL Visiting Air Traffic Control Specialist manning A80 TRACON positions.

### 1-1-3. CANCELLATION

This order cancels A80 7110.65D dated prior to June 1, 2020.

### 1-1-4. EFFECTIVE DATE

June 1, 2020

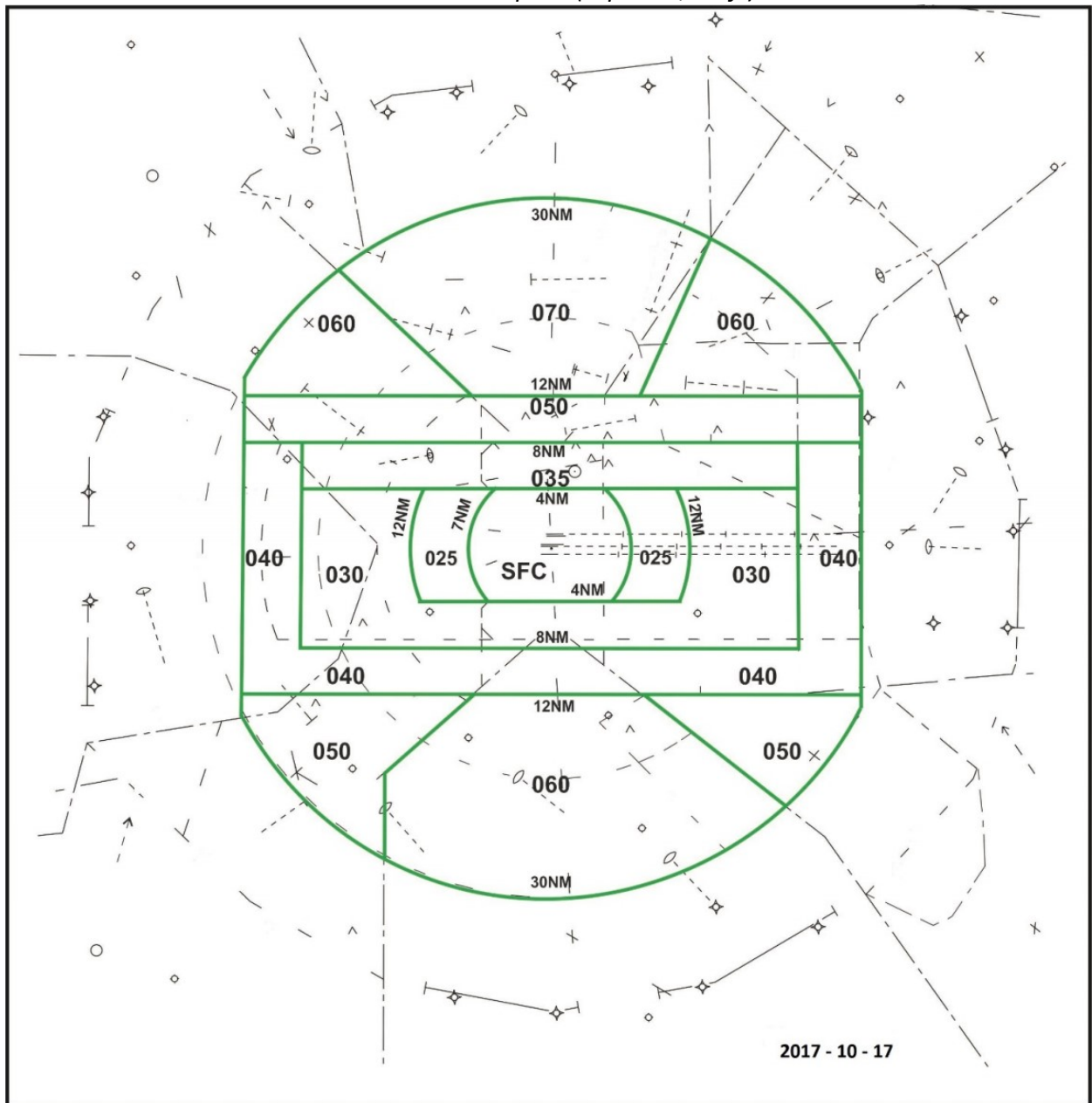
### 1-1-5. GENERAL AIRSPACE

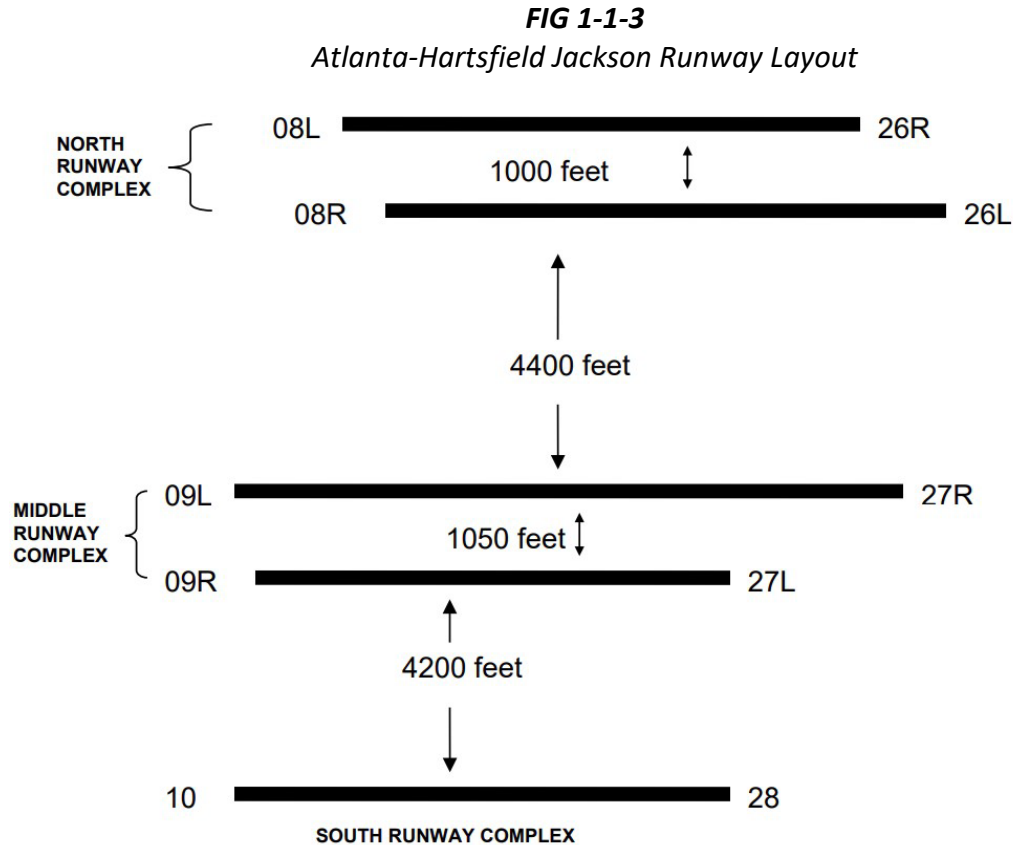
#### ***TBL 1-1-1***

#### *Operational Positions and Associated Frequencies*

TAR		AR		DR/SAT		OUTERS	
TAR-H	127.900	AR-O	124.600	DR-N	125.700	CSG-Z	125.500
TAR-D	128.000	AR-V	127.250	DR-S	125.650	MCN-M	124.200
TAR-L	128.520	AR-A	135.370	SAT-P	126.970	AHN-E	132.470
TAR-Y	124.720						

**FIG 1-1-1**  
*Atlanta Class B Airspace (top is 12,500ft)*



**NOTE –**

*Same runway complex requires 3nm/applicable wake turbulence separation.*

## Section 2. General Operating Procedures

### 1-2-1. TRAFFIC MANAGEMENT

- a. Comply with traffic management initiatives.
- b. Do not change routes or proposal times for aircraft participating in traffic management programs without prior coordination.

### 1-2-2. AIRSPACE JURISDICTION

Control positions have responsibility for 500 feet below the depicted lower altitude limit within their areas of jurisdiction. This airspace may be used by VFR aircraft only, without coordination. This excludes the AR airspace where the lower IFR limit is 2500 MSL. SAT retains at and below 2400 MSL for VFR operations outside of the CLASS B.

**NOTE –** *This is NOT intended to extend the lower limits of delegated airspace for use by IFR aircraft.*

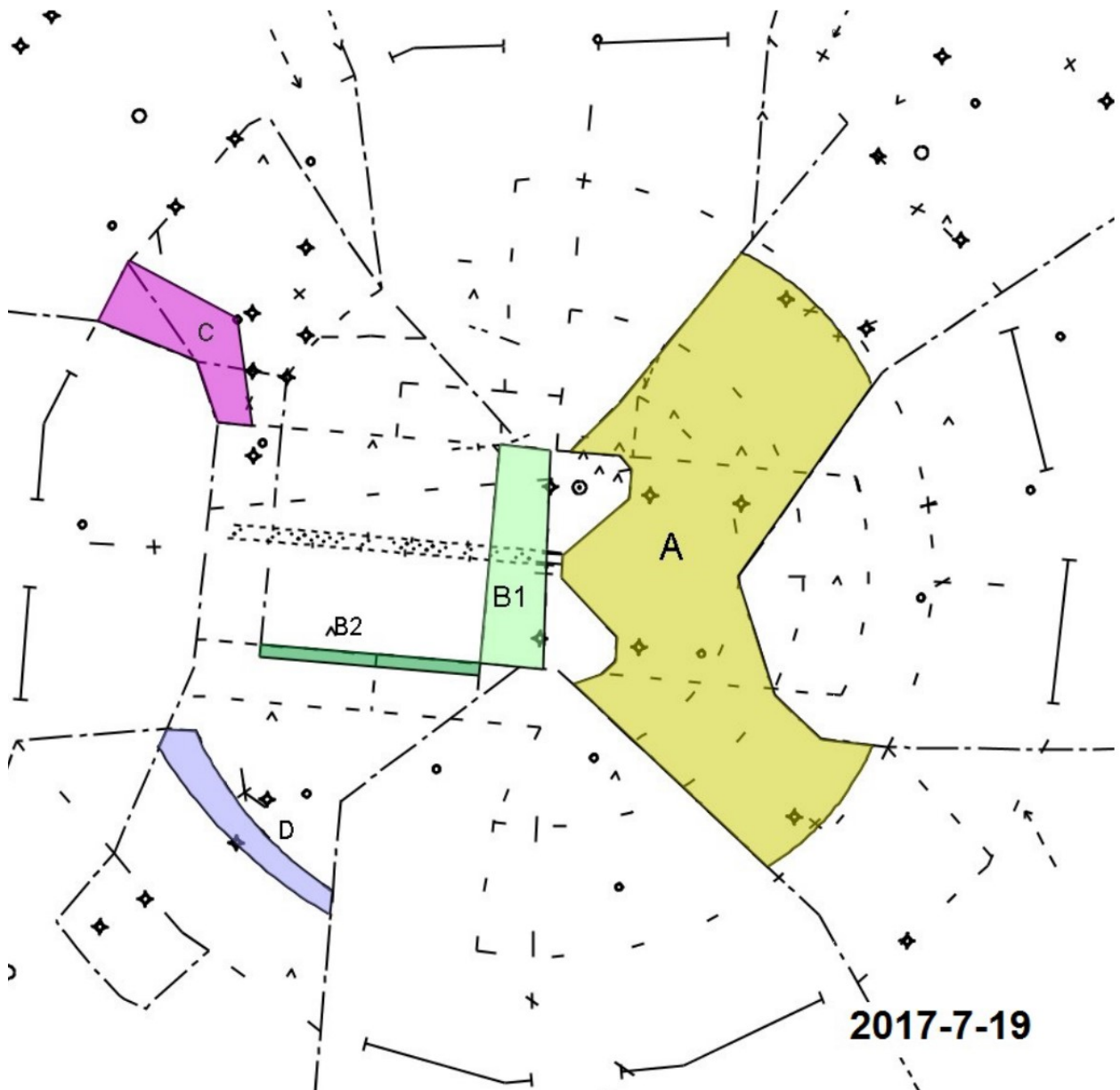
### 1-2-3. CLASS B / TRSA AIRSPACE

VFR aircraft operating within the Atlanta Class B or Macon TRSA Airspace should be assigned an appropriate VFR altitude.

### 1-2-4. PREARRANGED COORDINATION PROCEDURES (P-ACP)

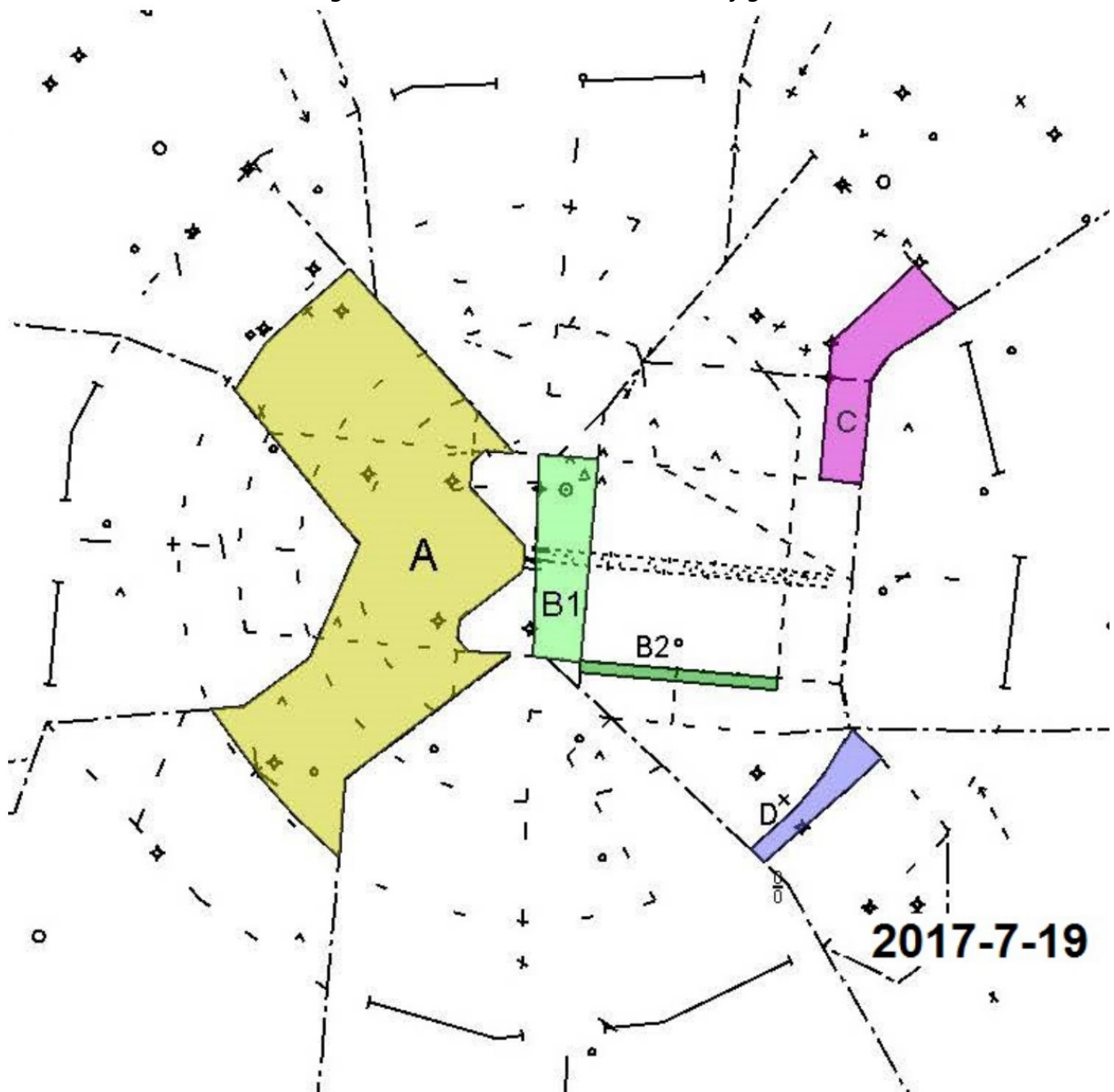
**FIG 1-2-1**

*Prearranged Coordination Areas - East Configuration*





**FIG 1-2-2**  
*Prearranged Coordination Areas - West Configuration*



- a. As depicted in Figures 1-2-1 and 1-2-2, the following areas are defined for the following uses:
1. **AREA "A"** – DR is authorized to use the airspace of TAR that laterally overlies their DR airspace within 30 miles of ATL, as depicted with the ATL Class B.
  2. **"B1"** – Arrival side of V97: AR is authorized to use SAT airspace for aircraft on the downwind to ATL. AR V is permitted to use the north downwind and AR A is permitted to use the south downwind. When 3 Final positions are in operation, AR O is not authorized to use P-ACP without prior coordination with the appropriate AR position.

3. **"B2"** – Arrival Base Leg, Shaded area between the lateral boundary of the ATL Class B, where SAT jurisdiction is SFC – 030 and the common boundary between AR and SAT. AR A is authorized to use SAT airspace for aircraft on the base leg to ATL.
  4. **"C"** – SAT is authorized to use the designated TAR airspace.
  5. **"D"** – TAR Base Leg, shaded area prior to the lateral limits of the ATL Class B. TAR is authorized to descend no lower than 5,000 MSL through SAT airspace.
- b. The position initiating the use of the prearranged coordinated area is responsible to provide radar separation, including wake turbulence application, from all traffic when utilizing this procedure.
  - c. Controllers using the P-ACP must use quicklook to display the the position symbol and altitude information and type of all aircraft in the P-ACP.

**NOTE 1** – *Mode C may not be used for separation purposes under P-ACP.*

**NOTE 2** – *The authority to use P-ACP combines along with the position.*

### 1-2-5. AUTOMATED POINT-OUT PROCEDURES

The automated point-out function may be used in lieu of verbal procedures to initiate a point-out. Due to VATSIM limitations, the receiving controller must verbally accept the point-out or require a handoff. The following additional limitations apply:

- a. Limitations.
  - i. Automated point-outs must not be used without a validated Mode C.
  - ii. Automated point-outs must be initiated and completed for one position at a time.
- b. The transferring controller must ensure all data block information is accurate, to include the Mode C readout, prior to initiating an automated point-out.
- c. The receiving controller must evaluate the information contained in the data block and may;
  - i. Verbally approve the point-out.
  - ii. Verbally accept a handoff.
  - iii. Verbally coordinate as necessary.

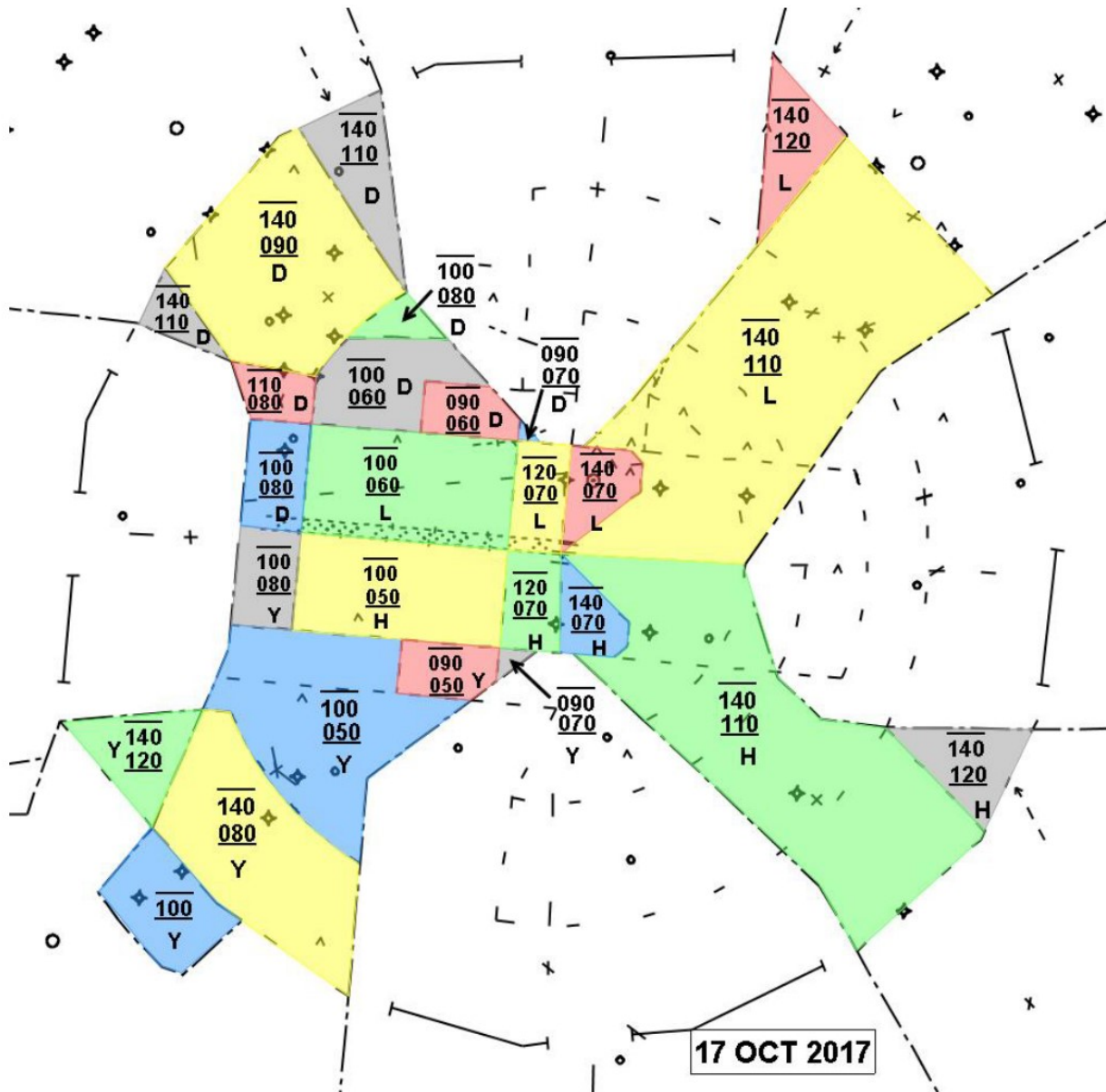
**NOTE** – *Failure of the receiving controller to take one of the above actions constitutes a disapproval of the point out and the transferring controller should withdraw the automated point out and initiate other alternatives.*

## Chapter 2. Terminal Arrival Radar (TAR)

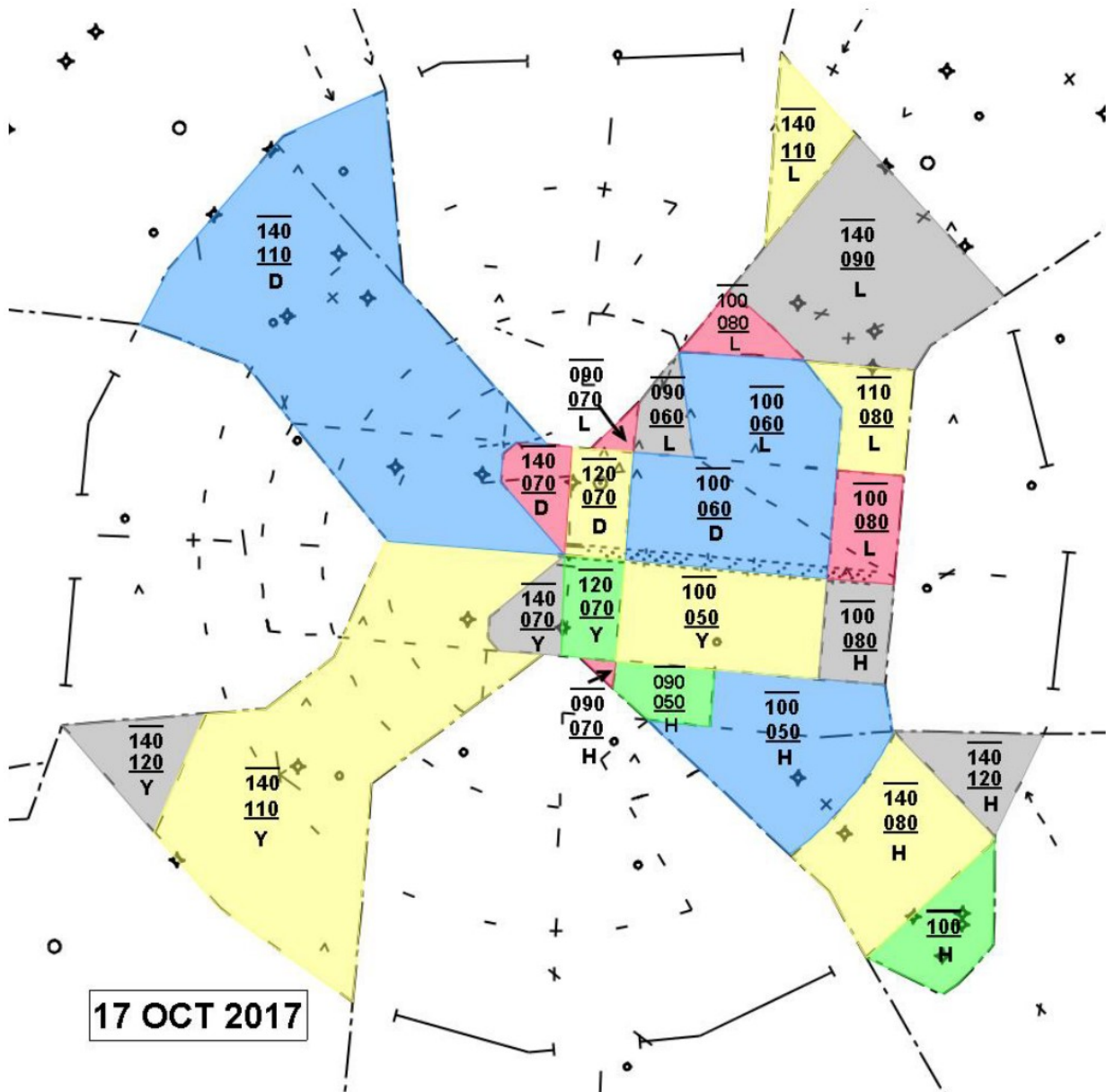
### Section 1. Area of Jurisdiction

**FIG 2-1-1**

*TAR Airspace East Configuration*



**FIG 2-1-2**  
*TAR Airspace West Configuration*



## Section 2. Position Information

**TBL 2-2-1**

Frequencies/Combining Positions		
<b>TAR-H</b>	<b>127.900</b>	<b>Base Frequency</b>
TAR-D	128.000	Combines to TAR-H
TAR-L	128.520	Combines to TAR-D
TAR-Y	124.720	Combines to TAR-H

## Section 3. Position Duties and Responsibilities

- a. Duties and responsibilities are IAW FAAO 7110.65, Terminal Radar Team Position Responsibilities.
- b. Provide approach control service to aircraft arriving ATL.
  - i. *Dual Operations.* TAR-D/L will normally assign aircraft Runway 8L/26R and TAR-H/Y will normally assign aircraft Runway 9R/27L.
  - ii. *Triple Operations.* TAR-D will normally assign 9L/R landing east and 26L/R landing west; TAR-H/Y will normally assign Runway 10/28; and TAR-L will normally assign Runway 8L/R landing east and Runway 27L/R landing west.
- c. On initial contact, inform aircraft of the approach and landing runway to expect when assigning or changing an aircraft to a runway that will require a side-step maneuver to land.
- d. Ensure user receipt of current arrival ATIS.
- e. As appropriate, the transferring TAR controller shall ensure that changes to the runway assignment, runway transition, and/or type of approach are issued to and acknowledged for by aircraft, for the correct Final Position prior to transfer of communications.

**NOTE 1** – Outside of 10 miles from the RNAV Runway Transition Waypoint:

Example – “(Aircraft ID) change transition to runway two six right.”

**NOTE 2** – At and inside of 10 miles from the RNAV Runway Transition Waypoint:

Example – “(Aircraft ID) change runway to runway two seven left, FLY HEADING ###”.

- f. If a runway change is issued when an aircraft is on the downwind or base leg, issue the new localizer frequency associated with the new runway.

## Section 4. Position Standard Operating Procedures

### 2-4-1. MANAGING TAR TRAFFIC

TAR primarily feeds traffic to AR from either the base leg or downwind leg.

**NOTE** – Refer to Chapter 1, Fig 1-1-9 for the depiction of the “North”, “Middle”, and “South” Complexes. Refer to Chapter 3, Figures 3-1-1 and 3-1-2 NOTES for the definition of the “Inner” and “Outer” final boxes.

#### a. Base leg feed:

- i. Ensure aircraft placed on the base leg can remain on the base leg and be contained within AR airspace.
- ii. Traffic should be at a manageable speed, usually not above 210 knots.
- iii. DUAL runway operation, NORTH base leg;
  1. NORTH Complex – The clearance limit is 6000’ in the “inner” final box and 8000’ in the “outer” final box.
  2. MIDDLE Complex – The clearance limit is 8000’ in the “outer” final box.
  3. SOUTH Complex – The clearance limit is 8000’ in the “outer” final box.
- iv. DUAL runway operation, SOUTH base leg;
  1. NORTH Complex – The clearance limit is 6000’ in the “outer” final box.
  2. MIDDLE Complex – The clearance limit is 5000’ in both the “inner and outer” final boxes.
  3. SOUTH Complex – The clearance limit is 5000’ in both the “inner and outer” final boxes.
- v. TRIPLE runway operation, NORTH base leg;
  1. NORTH Complex – The clearance limit is 6000’ in the “inner” final box.
  2. MIDDLE Complex – The clearance limit is 9000’ in the “outer” final box.
  3. SOUTH Complex – The clearance limit is 9000’ in the “outer” final box.
- vi. TRIPLE runway operation, SOUTH base leg;
  1. NORTH Complex – The clearance limit 6000’ in the “outer” final box.
  2. MIDDLE Complex – The clearance limit is 8000’ in the “outer” final box.
  3. SOUTH Complex – The clearance limit is 5000’ in both the “inner and outer” final boxes.

#### b. Downwind leg feed:

- i. Ensure downwind aircraft are established on the appropriate RNAV STAR or on a vector to emulate the RNAV STAR.
- ii. Traffic should be at a manageable speed, usually not above 210 knots.
- iii. Downwind leg clearance limit is normally 7,000 feet. Pattern traffic may be at a lower altitude in TAR airspace.

### 2-4-2. CONTROL TRANSFER BETWEEN TAR AND AR

- a. The TAR controller may change assigned heading, airspeed, and altitude of an aircraft after the handoff to AR has been accepted.

- b. Non-RNAV downwind aircraft shall display "NR#" in the Scratch Pad, where # is the second number of the arrival runway. Aircraft transitioning from the north via the outside base leg on radar vectors must be verbally coordinated with AR or have "NR#" in the Scratch Pad.

**EXAMPLE** — "NR6" for 26R; "NR8" for 8L in east flow or 28 in west; "NR0" for 10

### 2-4-3. CONTROL TRANSFER BETWEEN TAR POSITIONS

- a. The transferring TAR controller may change assigned heading, airspeed, and altitude after the receiving TAR controller accepts the handoff when traffic is being flowed.
- b. For aircraft flowed from the northeast or northwest long side/downwind leg, the transferring TAR (D or L) controller releases control for:
  - i. Turns at the ATL 15 DME;
  - ii. Descent not below 12,000 feet;
  - iii. Speed restrictions not below 250 knots until the ATL 20 DME.
- c. For aircraft flowed from the southeast or southwest long side/downwind leg, the transferring TAR (H or Y) controller releases control for:
  - i. Turns;
  - ii. Descent not below 12,000 feet;
  - iii. Speed restrictions not below 250 knots until ATL 20 DME.
- d. For aircraft flowed from the Base Leg to the Downwind during FTA's, the transferring TAR controller shall initiate a descent to 9,000 feet prior to communications transfer. The transferring TAR controller releases control for turns and speed restrictions not below 210 knots until the ATL 25 DME, and control for descent to 6,000 feet (TAR-D/L) or 5,000 feet (TAR-H/Y) and speed restrictions not below 180 knots inside of 25 DME, unless otherwise coordinated.
- e. *For aircraft flowed from the Opposite Direction Base Leg during FTAs*, the transferring TAR controller shall initiate a descent to 10,000 feet. The transferring TAR controller releases control for turns into / toward FINAL O airspace, descent, and speed no less than 210 KTS, inside the ATL 29 DME.

## Section 5. Potential Problem Areas

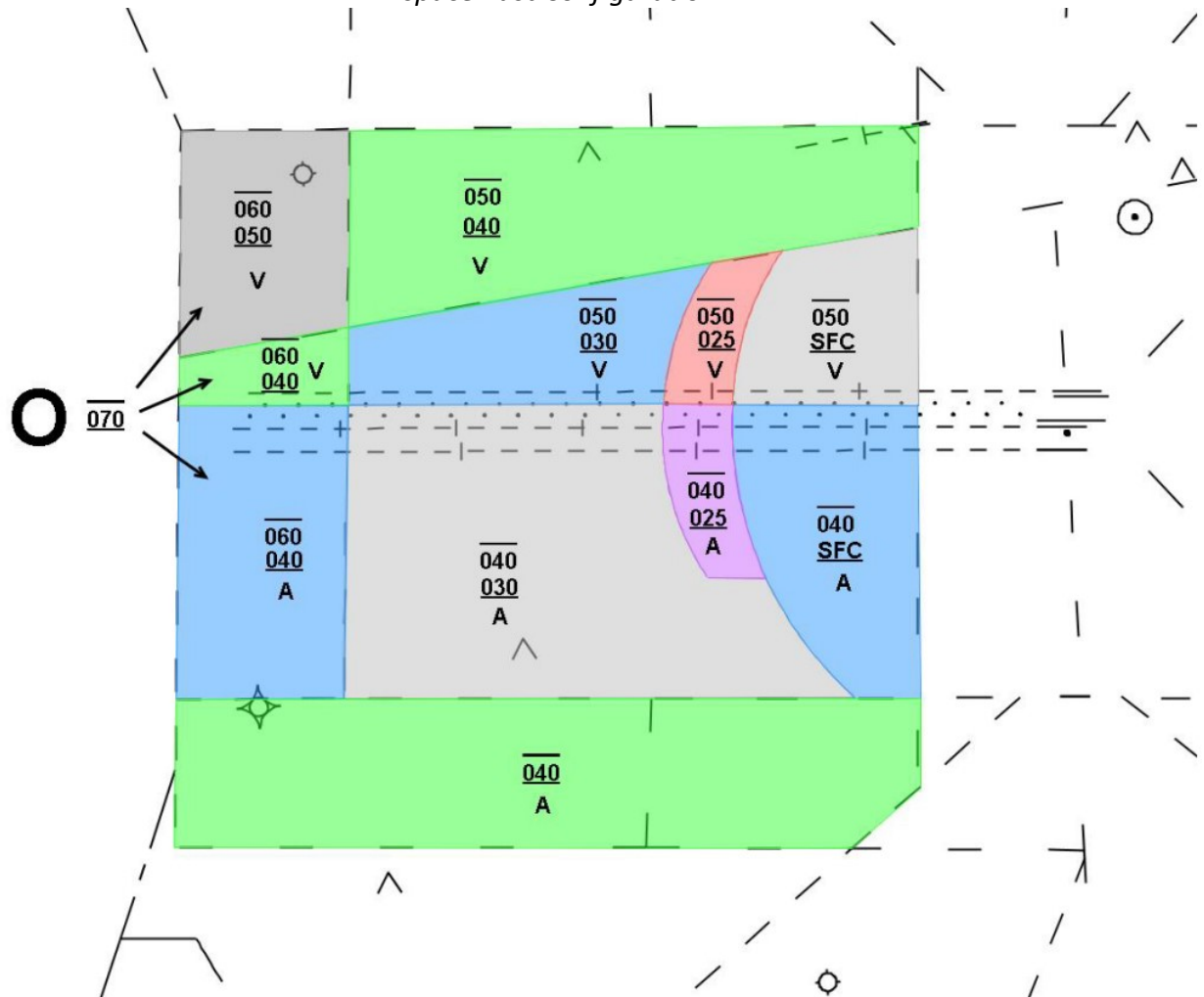
- a. Failure to descend base leg arrivals for the South Complex in a timely manner may result in aircraft being too high for AR to ensure proper IFR separation at turn-on to the final approach course.
- b. Failure of TAR to transfer communication to AR in a timely manner may result in a loss of separation.
- c. Failure of TAR to ensure base leg traffic is contained within AR delegated airspace may result in a loss of separation.
- d. Failure to issue runway changes and/or localizer frequencies in a timely manner may result in aircraft on the wrong final.

## Chapter 3. Arrival Radar (AR)

### Section 1. Area of Jurisdiction

**FIG 3-1-1**

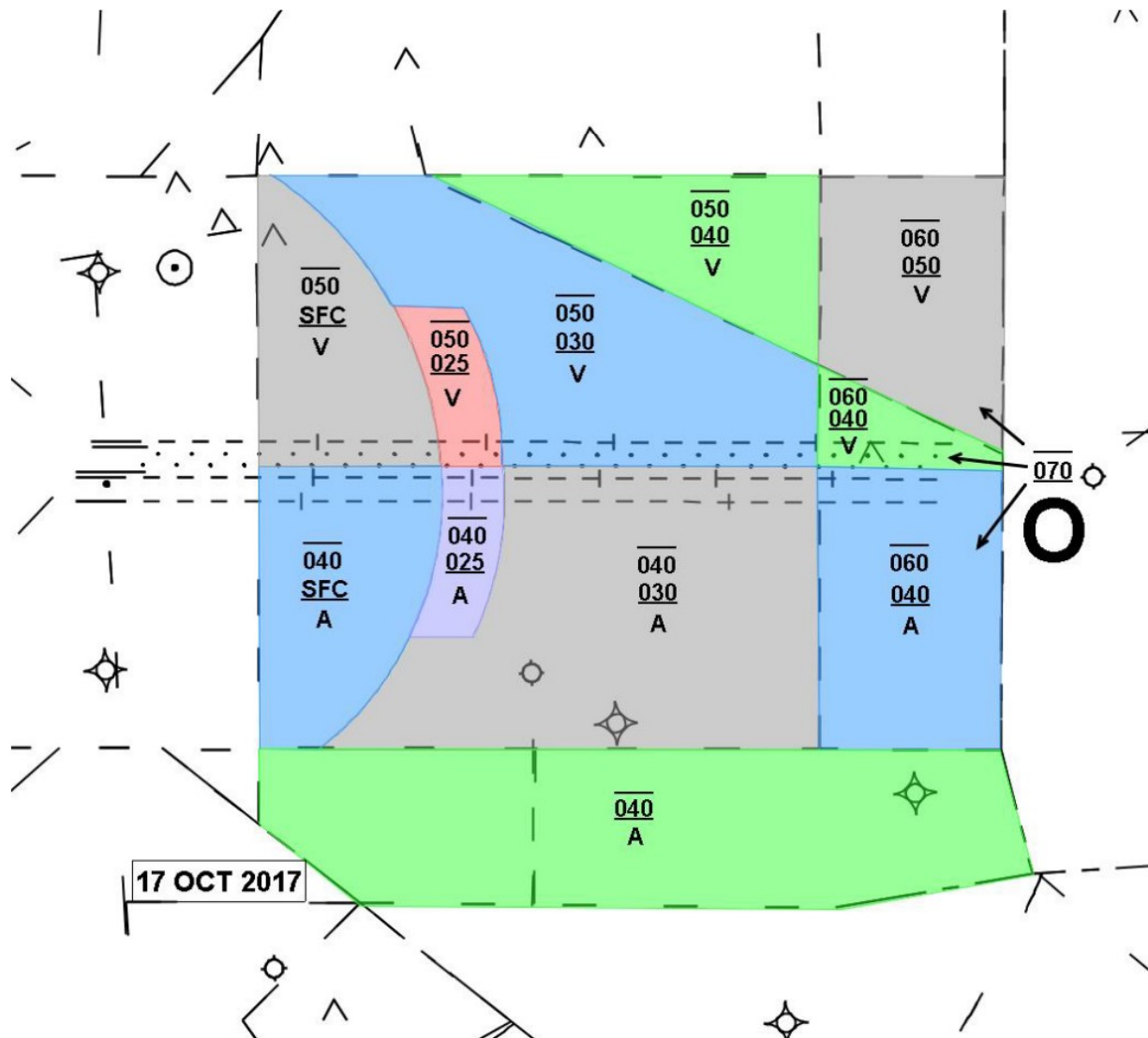
*AR Airspace East Configuration*



**NOTE** – “Inner Final Box” is that airspace between the beginning of AR airspace and the 20.5 DME. (Excluding the Green 040 “A” box). “Outer Final Box” is that airspace between the 20.5 DME and the end of AR airspace. (Airspace designated to “O”).



**FIG 3-1-2**  
AR Airspace West Configuration



**NOTE** – When conducting operations to two arrival runways (Duals) that portion of AR-O airspace north of V-18 is delegated to AR-V. IAW para 1-2-2a, AR may use 500 feet below their lateral limits for VFR operations only, EXCEPT in the area where the lower limit is 2500 MSL. “Inner Final Box” is that airspace between the beginning of AR airspace and the 20.5 DME. (Excluding the Green 040 “A” box). “Outer Final Box” is that airspace between the 20.5 DME and the end of AR airspace. (Airspace designated to “O”).

## Section 2. Position Information

**TBL 3-2-1**

Frequencies/Combining Positions		
AR-O	124.600	Base Frequency
AR-V	127.250	Combines to AR-O
AR-A	135.370	Combines to AR-O

## Section 3. Position Duties and Responsibilities

- Duties and responsibilities are IAW FAAO 7110.65, Terminal Radar Team Position Responsibilities.
- Maintain a consistent interval on the final approach course IAW FAAO 7110.65 minima.
- Should, on initial contact, restate the landing runway assignment.
- Enter the landing runway in the scratch pad for any aircraft landing on other than a designated arrival runway. This includes Runway 10/28 when Full Triple Arrival (FTA) Procedures are not in use.

**NOTE** – FTA procedures are defined as those times when A80 will be assigning three (3) landing runways on a full time basis regardless of type approach in use. When FTA procedures are in use, individual coordination to use runway 10/28 is not required.

- Unless otherwise coordinated, a hand-off and transfer of communications shall be accomplished to ensure that final controllers work all aircraft assigned a runway for which they have responsibility.
- The Final Controller initiating a runway change shall ensure that the new runway assignment and localizer frequency are issued to and acknowledged for by the aircraft.
- Prior to communications transfer to another Final Controller, ensure the correct runway assignment and associated localizer frequency has been issued to and acknowledged for by the aircraft.
- To the maximum extent practical, allow aircraft navigating on an RNAV STAR that contains altitude restrictions, to remain on the star by issuing “Descend Via” and approach clearances when appropriate.

## Section 4. Position Standard Operating Procedures

### 3-4-1. SCRATCH PAD INFORMATION

- As appropriate, use the Scratch Pad entries contained in the Atlanta Large TRACON and Atlanta Airport Traffic Control Tower Letter of Agreement. This constitutes coordination with ATL ATCT using Automated Information Transfer (AIT).

- b. When a controller enters a “V” or “VR” into the scratch pad, the controller is declaring that the aircraft is OR will be cleared for a visual approach prior to losing standard separation with any other aircraft on an adjacent final. Use “VS” to indicate that your pilot is providing visual separation with other aircraft and is or will be cleared for an ILS.
- c. The controller entering the scratch pad entry accepts all separation responsibility for that aircraft from aircraft on the adjacent finals.

### 3-4-2. INTERCEPT OF THE FINAL APPROACH COURSE

Turbojet and four-engine propeller-driven aircraft arriving Atlanta must be controlled in a manner that ensures the aircraft are established on the extended runway centerline a minimum of five (5) miles from the approach end of the runway.

### 3-4-3. ARRIVALS TO TWO RUNWAYS (DUALS)

#### a. Simultaneous Visual Approaches

- i. Assign headings that will:
  - 1. Ensure a track to intercept the extended centerline of the runway at an angle not greater than 30 degrees.
  - 2. Ensure a track to intercept the final approach course at an angle not greater than 30 degrees and a speed not to exceed 210 knots during turn onto final when utilizing runways 9R/27L and 10/28. (Waiver 09-T-09 – see appendix 1)
- ii. AR-V normally issues a clearance limit of 5,000 feet or above.
- iii. AR-A/O normally issues a clearance limit of 4,000 feet or below.

#### b. Simultaneous Visual/Instrument Approaches

- i. Instrument Approach North/VA South:
  - 1. AR-V conducts Instrument approaches, normally issues a clearance limit at or above 5,000 feet, and turns on outside HAINZ, BOYKN, MAASN, SEJAY, JAAJ, PEARI, ARRBE or GGUY.
  - 2. AR-A/O conducts visual approaches; normally issues a clearance limit of 4,000 feet or below, and assigns aircraft a heading to intercept the extended runway centerline at an angle not greater than 30 degrees.
- ii. Instrument Approach South/VA North:
  - 1. AR-A/O conducts Instrument approaches; normally issues a clearance limit of 4,000 feet or below, and turns on outside HRDEY, EEASY, CTEEE, MRCER, GRMPI or WONZR.
  - 2. AR-V conducts visual approaches, normally issues a clearance limit at or above 5,000 feet, and assigns aircraft a heading to intercept the extended runway centerline at an angle not greater than 30 degrees.

**NOTE 1** – *Weather requirements for visual approaches dictate that aircraft vectored to intercept parallel final approach courses at the same altitude would be in VFR conditions; therefore the controller conducting Instrument approaches should issue specific traffic information to aircraft*

*vectored to intercept the final approach course inside the appropriate outer fix, side-by-side with aircraft conducting visual approaches.*

**c. Simultaneous Independent Instrument Approaches (SIAPS)**

- i. Aircraft shall be turned on so as to ensure they are established on the FAC at altitudes in accordance with the fix identified in Table 3-4-2, and switched to the appropriate local frequency prior to the fix identified in Table 3-4-1, except in the following cases.
  1. Visual separation is applied.
  2. 1,000 feet vertical or a minimum of three (3) miles radar separation between aircraft during turn-on to parallel final approach courses (FAC) is provided.
  3. AR controllers providing separation in accordance with (1) or (2) above are responsible for that separation until the aircraft is established on the FAC, and the aircraft is on the appropriate LC frequency.
- ii. Traffic vectored to the North Runway FAC shall be at or above 5,000 feet unless coordination has been effected with AR-A/O.
- iii. Traffic vectored to the South Runway FAC shall be at or below 4,000 feet unless prior coordination has been effected with AR-V.

### **3-4-4. ARRIVALS TO THREE RUNWAYS (TRIPS)**

**a. Simultaneous Triple Visual Approaches**

- i. Assign headings that will:
  1. Ensure a track to intercept the extended centerline of the runway at an angle not greater than 30 degrees.
  2. Ensure a track to intercept the final approach course at an angle not greater than 30 degrees and a speed not to exceed 210 knots during turn onto final when utilizing runways 9R/27L and 10/28. (Waiver 09-T-09 – see appendix 1)
- ii. AR-V normally issues a clearance limit between 5,000 and 6000 feet.
- iii. AR-O normally issues a clearance limit of 7,000 feet.
- iv. AR-A normally issues a clearance limit of 4,000 feet or below.

**b. Combination Instrument/VA Approaches**

- i. Instrument or Visual approaches may be conducted to any combination of runways.

**NOTE** – *Nothing in this paragraph is intended to preclude clearing an aircraft for a visual approach that was originally cleared for an Instrument approach.*

- ii. Assign headings that will:
  1. Ensure a track to intercept the extended centerline of the runway at an angle not greater than 30 degrees.
  2. Ensure a track to intercept the final approach course at an angle not greater than 30 degrees and a speed not to exceed 210 knots during turn onto final when utilizing runways 9R/27L and 10/28. (Waiver 09-T-09 – see appendix 1)

- iii. AR-V normally issues a clearance limit of 5,000 feet.
- iv. AR-O normally issues a clearance limit of 7,000 feet.
- v. AR-A normally issues a clearance limit of 4,000 feet or below.

**NOTE 1** – *Weather requirements for visual approaches dictate that aircraft vectored to intercept parallel final approach courses at the same altitude would be in VFR conditions. Therefore, the controller conducting Instrument approaches should issue specific traffic information to aircraft vectored to intercept the final approach course inside the appropriate outer fix, side-by-side with aircraft conducting visual approaches.*

**NOTE 2** – *IAW Waiver 09-T-09 (see appendix 1), treat runways 9R/10 and 27L/28 as if they are 4300 feet apart when clearing one of those aircraft for a visual approach.*

### 3-4-5. CONTROL TRANSFER

Between AR and TAR: AR may change assigned heading, airspeed, and altitude of an aircraft in TAR airspace after accepting the handoff from TAR. However, AR shall advise TAR prior to initiating vectors to the downwind with base leg traffic.

- a. When sequencing aircraft to the center runway inside of the 7,000-foot turn on fix, AR-O must coordinate with AR-A/V for approval prior to leaving 7,000 feet.
- b. AR-O is authorized to transition TAR-D/H/L/Y airspace when vectoring to the 9L/R or 27L/R final approach course outside the 6,000-foot fix without coordination.

### 3-4-6. TRANSFER OF COMMUNICATION/CONTROL BETWEEN TRACON AND TOWER

- a. The LC positions shall Quick Look the AR positions, or as appropriate, the TAR or DR positions.
- b. Transfer of control and communications changeover points are identified in TBL 3-4-1.
- c. There are no hours or conditions under which facility policy prohibits the use of the Quick Look function for data transfer. At all times, the LC positions are responsible for determining whether the use of the Quick Look function is satisfactory, or if some other mode of transfer is to be used (e.g., voice call or radar handoff).

**TBL 3-4-1***Transfer of Control/Communications Changeover Points*

<b>RUNWAY</b>	<b>TRANSFER POINT</b>	<b>RUNWAY</b>	<b>TRANSFER POINT</b>
26R	AAJAY	8L	SCHEL
26L	DEJAA	8R	HARSN
27R	OSTRR	9L	VINII
27L	DEPOT	9R	BURNY
28	JUBBA	28	JUBBA

**TBL 3-4-2***SIAPS Establishment Points*

DUALS									
LARII		JAAJJ	BAZAR	8L	26R	BAMBU	HAINZ	ZELOW	
5,000A							5,000A		
ANDIY	DFINS	GGUYY	EEASY	9R	27L	GRMPI	SEJAY	ROMMM	SLVAA
4,000B			3,000			3,000	4,000B		

TRIPS									
LARII		JAAJJ	BAZAR	8L	26R	BAMBU	HAINZ	ZELOW	
5,000A								5-6,000	
ANDIY	DFINS	GGUYY	EEASY	9R	27L	GRMPI	SEJAY	ROMMM	SLVAA
7,000									7,000
DEWHY		abeam GGUYY	CTEEE	10	28	WONZR	abeam SEJAY	PRMAN	
4,000B			3,000			3,000	4,000B		

### 3-4-7. GO-AROUND PROCEDURES

**NOTE –**

*Unless otherwise coordinated, "North Runway" means 8L/R-26R/L. "South Runway" means 9L/R-27R/L in Duals and 10/28 in Trips.*

- a. Go-Around Procedures for Outside Runways
  - i. LC will retain aircraft in Tower airspace, and:
    - 1. Issue 4,000 feet to aircraft on the North Runway;
    - 2. Issue 3,000 feet to aircraft on the South Runway;
  - ii. Coordinate with the appropriate AR.
  - iii. AR will issue to LC a heading toward the downwind.
  - iv. LC will issue a speed not to exceed 210 knots and transfer communications to the appropriate AR. Communications transfer to AR constitutes LC release of control for turns toward the downwind, speed and altitude changes.
- b. Go-Around Procedures for the Middle Runway
  - i. LC will climb the aircraft to 4000, resolve all conflicts with Rwy 10/28 traffic, retain aircraft in Tower airspace and coordinate with AR-A.
  - ii. AR-A will issue to LC a heading toward the downwind.
  - iii. LC will issue the AR-A assigned heading to the aircraft, a speed not to exceed 210 knots and transfer communications to AR-A frequency. Communications transfer constitutes release of control to AR-A for turns to the downwind, speed and altitude changes.

### 3-4-8. BREAKOUT/BLUNDER PROCEDURES

- a. Breakout Procedures are used when an aircraft is observed to be deviating (blundering) into the NTZ.
 

**PHRASEOLOGY** – *TRAFFIC ALERT, (call sign), TURN (right/left) IMMEDIATELY HEADING (degrees), and/or CLIMB/DESCEND AND MAINTAIN (altitude)*
- b. After the breakout is initiated as described in paragraph (a) above, Cancel Approach Clearance and issue a control instructions as required to re-sequence the aircraft.

### 3-4-9. REDUCED SEPARATION ON FINAL

Reduced separation on final (2.5NM) is authorized to the following runways in accordance with FAAO 7110.65: 8L, 9R, 10, 26R, 27L, and 28.

## Section 5. Potential Problem Areas

- a. There is a potential for loss of IFR separation when turning aircraft on to the FAC.
- b. Timely transfer of communication from AR to LC must be accomplished prior to aircraft losing vertical separation during monitored approaches.

- c. When swapping aircraft from one final to another, ensure appropriate vertical separation is achieved in order to prevent aircraft from being nose-to-nose at the same altitude.
- d. Not using good judgment and common sense may result in less than optimum performance, thus resulting in degraded efficiency.
- e. During Simultaneous Triple Visual Approaches, it is important for AR-O to assign an altitude to maintain until established on the final approach course when turning on inside the 7,000-foot fix. This will preclude a possible loss of separation by ensuring that aircraft being worked by AR-O do not prematurely descend into AR-A/AR-V traffic being vectored to the final approach course.
- f. During SIAPs, AR-V has the option of turning on to the final approach course between 5,000 feet and 6,000 feet. Unless 3-miles radar separation is used, AR-V must assign an appropriate altitude to ensure 1,000 feet vertical separation is maintained from both AR-O and AR-A aircraft until established on the final approach course
- g. In order to avoid unnecessarily compounding traffic complexity and workload, take the following actions prior to breaking aircraft off the adjacent final of an aircraft who has not established radio communication with the tower in a timely manner AND is following the instrument approach profile:
  - i. Attempt direct communication with the aircraft.
  - ii. Ask the Final Controller to switch the aircraft to the Tower again and reattempt direct communication with the aircraft.
  - iii. If no reply is received from the aircraft, ask the aircraft to IDENT to establish they are on frequency.

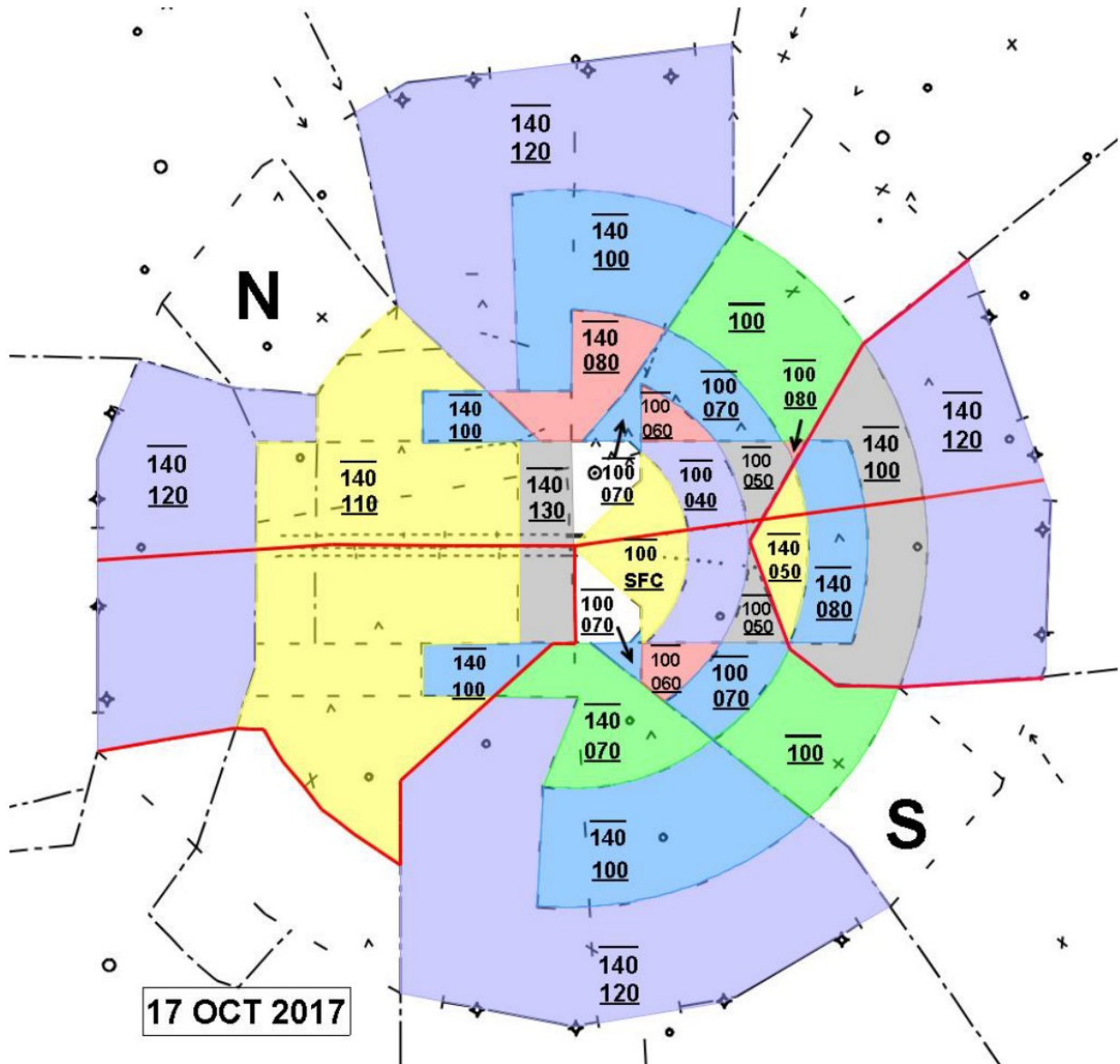


## Chapter 4. Departure Radar (DR)

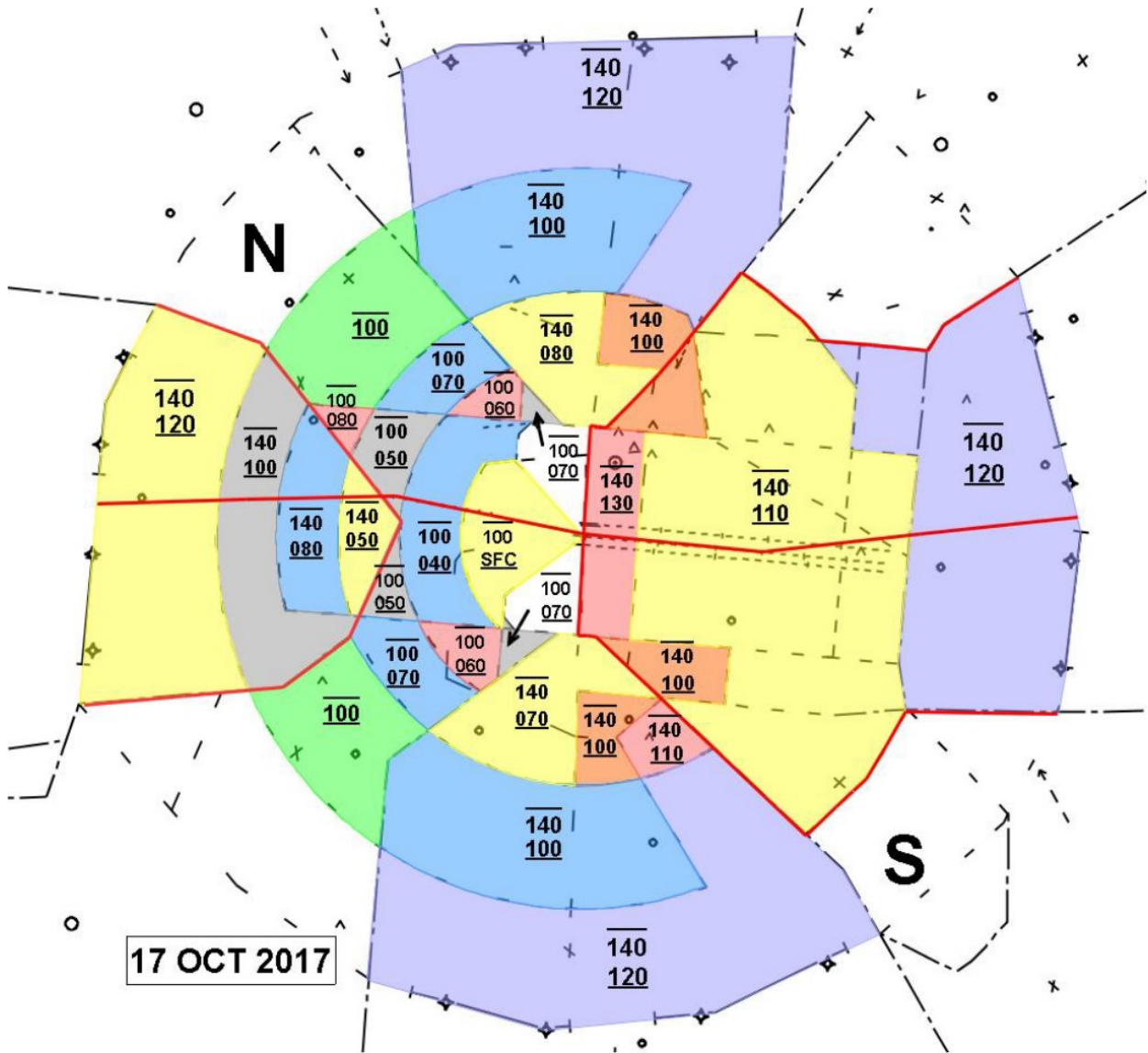
## Section 1. Area of Jurisdiction

**FIG 4-1-1**

### DR Airspace East Configuration



**FIG 4-1-2**  
*DR Airspace West Configuration*



## Section 2. Position Information

**TBL 4-2-1**

Frequencies/Combining Positions		
DR-N	125.700	Base Frequency
DR-S	125.650	Combines to DR-N

- a. **Departure Split: The Tower calls The Departure Split**
  - i. Each fix in a Departure Transition Area (DTA) may be individually configured to DR-N or DR- S with the exception of HAALO/BANNG and the North DTA, which cannot be split.
  - ii. When assigning the departure split, the Tower, after coordination with the TRACON, may define splits of one or more fixes in each DTA to be assigned to each DR. Fixes assigned to each DR must be adjacent. (e.g. PLMMR and JACCC may be assigned to DR-N, but not PLMMR and PHIL without JACCC.)
  - iii. All airspace within a single departure gate shall be assigned to a single DR position.
  - iv. Tower shall advise A80 of all aircraft departing runways not associated with the current departure split.

### **Section 3. Position Duties and Responsibilities**

- a. Duties and responsibilities are IAW FAAO 7110.65, Terminal Radar Team Position Responsibilities.
- b. Provide departure control service to aircraft departing ATL in accordance with appropriate directives.
  - i. DR-N normally provides service to aircraft departing the North Complex; DR-S normally provides service to aircraft departing the Center and South Complex.
- c. Traffic permitting, provide departure service to turbojet aircraft departing SAT airports.
- d. Evaluate the effectiveness of assigned departure headings and advise LC if adjustments are necessary to ensure separation from adjacent runway RNAV tracks / headings.

### **Section 4. Position Standard Operating Procedures**

- a. Ensure departure aircraft are routed via the appropriate departure gate/RNAV SID.
- b. Unless an operational need exists, turbojets shall not be turned off the departure heading / RNAV until five (5) miles from the departure end of the runway or 5,000 feet. However, aircraft cleared via an RNAV SID and assigned a departure heading may be cleared direct to the first RNAV waypoint on the Tower assigned departure heading. Clearance to the first RNAV waypoint must ensure standard separation from other aircraft departing the same or parallel runway(s).
- c. **DR/SAT and DR/DR Coordination:**
  - i. Upon accepting a handoff on aircraft from SAT, initiate a climb into DR airspace as soon as practical. DR has control for climb.
  - ii. DR has control for a single turn up to 30-degrees toward the Departure Gate/Fix. This control may only be assumed by the first DR sector to take radar from SAT.
  - iii. The Receiving DR has control for a single turn up to 30-degrees toward the Departure Gate/Fix.

- d. Atlanta RNAV Departures that are landing CSG airport must be cleared direct CSG airport prior to communication change to CSG Sector at even altitudes 10,000 feet and below.
- e. Transfer communication to an adjacent sector as soon as possible to enable the aircraft to continue an uninterrupted climb.
- f. During FTD's, if an aircraft departing ATL is not assigned a DTA/Fix that is contained within the initial DR sector's airspace, as soon as practical, initiate a handoff/pointout to the appropriate sector. The receiving DR has control to turn aircraft into their airspace and climb.

### **Section 5. Potential Problem Areas**

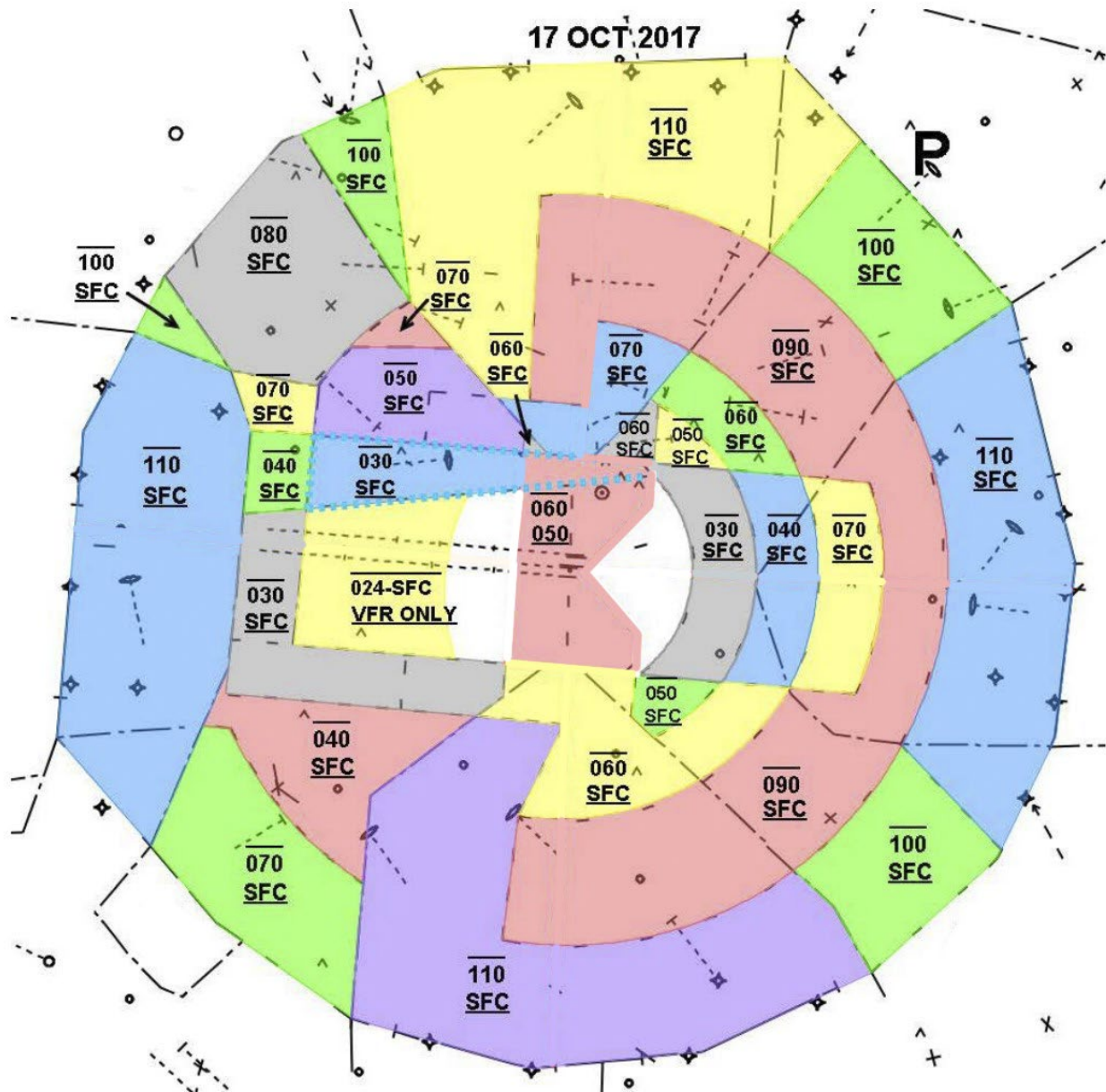
- a. RNAV aircraft on their own navigation could conflict with non-RNAV aircraft turned early/late at the pivot points.
- b. Lack of consistency of RNAV aircraft performance may cause conflict with other aircraft/airspace.
- c. Application of Transitional Separation between RNAV and non-RNAV aircraft may cause a conflict if the full RNAV path is not considered
- d. Point-outs from Satellite may not define what RNAV waypoint the aircraft are being vectored over. (e.g. WE2, EA1 does not specify CUTTN/NASSA or PLMMR/JACCC).

## Chapter 5. Satellite Radar (SAT)

### Section 1. Area of Jurisdiction

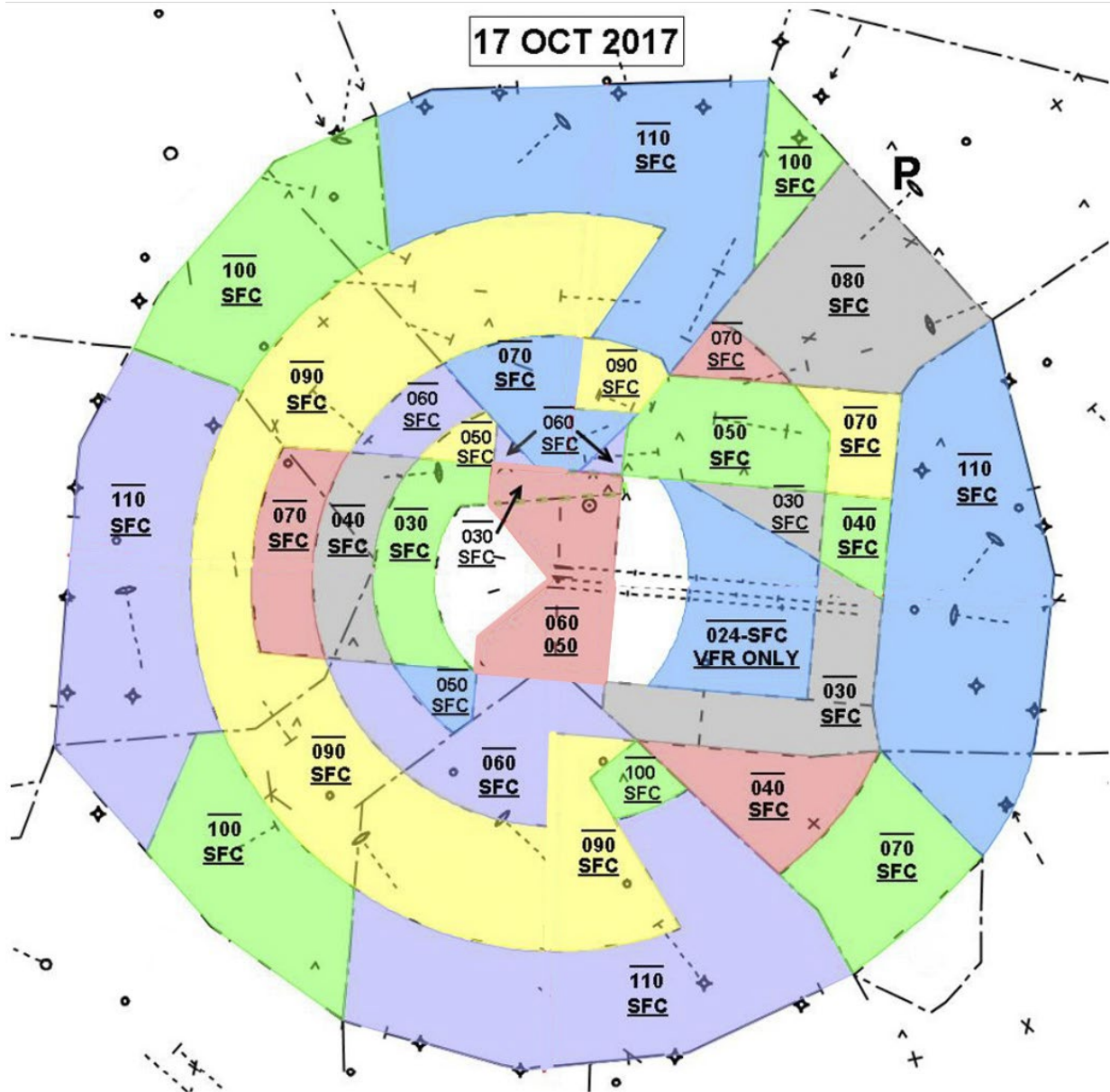
**FIG 5-1-1**

*SAT Airspace East Configuration*

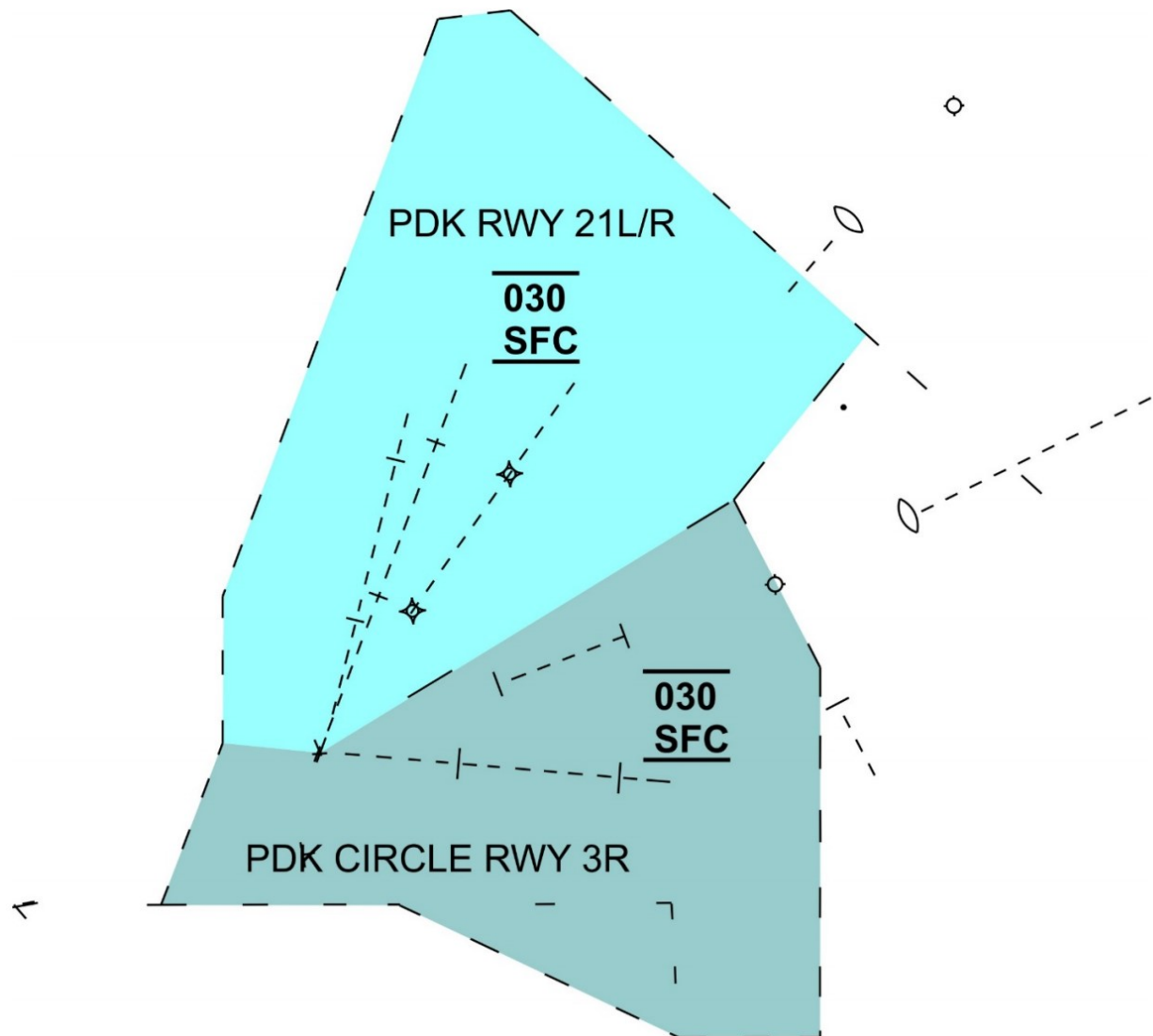




**FIG 5-1-2**  
SAT Airspace West Configuration



**FIG 5-1-3**  
PDK Final



## Section 2. Position Information

Frequencies/Combining Positions		
SAT-P	126.970	Base Frequency

## Section 3. Position Duties and Responsibilities

- Duties and responsibilities are IAW FAAO 7110.65, Radar Team Position Responsibilities.
- Provide approach, departure, and overflight service to aircraft operating within delegated SAT area of jurisdiction.
- Ensure user receipt of appropriate ATIS for aircraft landing ATL and within the SAT airspace.

- d. Maintain an appropriate interval on the final approach course for satellite airports IAW FAAO 7110.65 minima.
- e. Verbally coordinated with the appropriate satellite Tower for aircraft requesting other than the designated arrival runway.
- f. Obtain a down time or cancellation on IFR traffic at airports not served by a control tower.
- g. Point-out aircraft that will penetrate the DR/TAR Prearranged Coordination Area to the appropriate DR and TAR positions.

## **Section 4. Position Standard Operating Procedures**

### **5-4-1. DEPARTURES**

- a. Turbojets departing satellite airports requesting 12,000 feet or above shall initially be worked by the appropriate SAT positions.
- b. Ensure that the correct vector area is in the data tag scratch pad.
- c. To the extent practical, vector aircraft toward the appropriate RNAV SID waypoint corresponding to the aircraft's assigned route of flight. (e.g. Aircraft filed over AHN should be vectored over JACCC; aircraft filed over GAD should be vectored over CUTTN; etc.).
- d. Initiate a handoff and/or point-out to the appropriate DR.
- e. Departure/SAT Coordination:
  - i. DR has control for a single turn up to 30-degrees toward the Departure Gate/Fix.
  - ii. SAT shall display the full data block of aircraft handed off to DR until the aircraft leaves 12,000 feet.
- f. In the event DR cannot accept a handoff or point-out on turbojet aircraft requesting above 11,000 feet, retain the aircraft in SAT airspace. Coordinate with the adjacent ZTL sector prior to initiating a handoff.
- g. Coordination between SAT and AHN: Aircraft departing LZU, D73, CVC, WDR and GVL filed at 10,000 feet or below may be assigned headings which will take the aircraft into adjacent sectors airspace. These aircraft may be assigned the adjacent sector's frequency as the initial departure control frequency. When these aircraft are released, the receiving sector controller has control for climb.

### **5-4-2. ARRIVALS**

- a. **SAT Arrivals:**
  - i. All VFR aircraft conducting practice instrument approaches at airports with operating control towers shall be provided standard IFR separation IAW FAAO 7110.65, except 500 feet vertical separation is authorized when wake turbulence is not a factor.
  - ii. Aircraft from MCN and CSG sectors landing Carrollton (CTJ), Monroe Walton County (D73) or airports south of V18 shall be cleared direct destination airport:
    - 1. From MCN Sector: at 4,000 or 6,000 feet.



2. From CSG Sector: at 5,000 or 7,000 feet.
  3. SAT shall have control for descent.
  4. RNAV Aircraft landing D73 may be cleared direct SKYME the appropriate STAR.
- iii. From AHN Sector:
1. Aircraft landing north of V18, requesting 10,000 feet or below shall be cleared via V-325 WOMAC direct destination airport, at 6,000 feet.
  2. Turbojet and high performance turbo prop aircraft landing south of V18, requesting 10,000 feet or below, shall be cleared via the MADDI intersection direct HUSKY intersection direct destination airport, at or descending to 6,000 feet.
  3. Props and low performance turboprops landing south of V18 shall cleared via the MADDI intersection direct HUSKY intersection direct destination airport, at or descending to 4,000 feet.
  4. Aircraft landing LZU shall be cleared direct LZU or established on the localizer at 4,000 feet. A80 Atlanta Satellite Sector shall have control for descent.
  5. The destination airport shall be indicated in the scratch pad for all IFR and VFR aircraft.
- b. **ATL Arrivals:** Accept handoffs on props and low performance turboprops at 6,000 feet from MCN and 5,000 feet from CSG (6,000 feet V97) and 6,000 feet from AHN via V325.
- a. **Overflights:** cleared via the TEE Routes at and below 7,000 feet or must be coordinated on an individual basis, workload permitting.
- b. **Aircraft movement between SAT and CSG/MCN/AHN Sectors:**
- i. Aircraft entering CSG shall be cleared on course at even altitudes, 10,000 feet and below. Clear aircraft landing CSG airport direct CSG airport prior to communication change to the CSG sector. On an East Operation, aircraft at 8,000 and 10,000 feet shall transition the departure gate. CSG shall have control for descent for aircraft landing 7A5, LGC, PIM, and 5A9 airports. CSG shall remain clear of Arrival Sector airspace or accomplish a point out.
  - ii. Aircraft entering CSG via V97 (or on a direct route overlying V97) shall be given an odd altitude.
  - iii. Aircraft entering MCN shall be cleared on course at odd altitudes, 9,000 feet and below. On a West Operation, aircraft at or above 8,000 feet shall transition the departure gate. At the completion of a radar hand off, MCN shall have control for descent for aircraft landing OPN airport. MCN shall remain clear of ARR airspace or accomplish a point out.
  - iv. Turbojet aircraft requesting 10,000 feet, landing at Macon Regional Airport (MCN), shall be cleared on course at 10,000 feet. At the completion of a radar hand off, MCN shall have control for descent; MCN shall remain clear of ARR airspace or accomplish a point out.
  - v. Aircraft entering AHN shall be cleared on course at odd altitudes 9,000 feet and below. All aircraft shall transition the departure gate unless otherwise

- coordinated. AHN shall have control for descent for aircraft landing GVL and WDR airports. AHN shall remain clear of AR airspace or accomplish a point out.
- vi. Aircraft landing north of V18 may be cleared:
    - 1. CSG sector; all RNAV aircraft via the BOKRT STAR, and Non-RNAV aircraft via the DIFFI STAR or the LGC 013 radial to intercept the RMG 172 radial to DIFFI intersection direct destination airport. Turbojet and high performance turboprop at 9000 or 7000 feet. Props and low performance turboprops at 7000 or 5000 feet.
    - 2. MCN sector; all RNAV aircraft via the appropriate STAR, and all Non-RNAV aircraft via the MCN354 radial to the MCN354068 DME fix, direct destination airport. Turbojets and high performance turboprops at 8000 or 6000 feet. Props and low performance turboprops at 6000 or 4000 feet.
  - vii. AHN releases control for climb for aircraft released from WDR and GVL airports directly to SAT.
  - viii. At the completion of a RADAR handoff, all traffic transferring between A80 SAT, CSG, MCN and AHN sectors are released for control for turns, not to exceed 30 degrees.

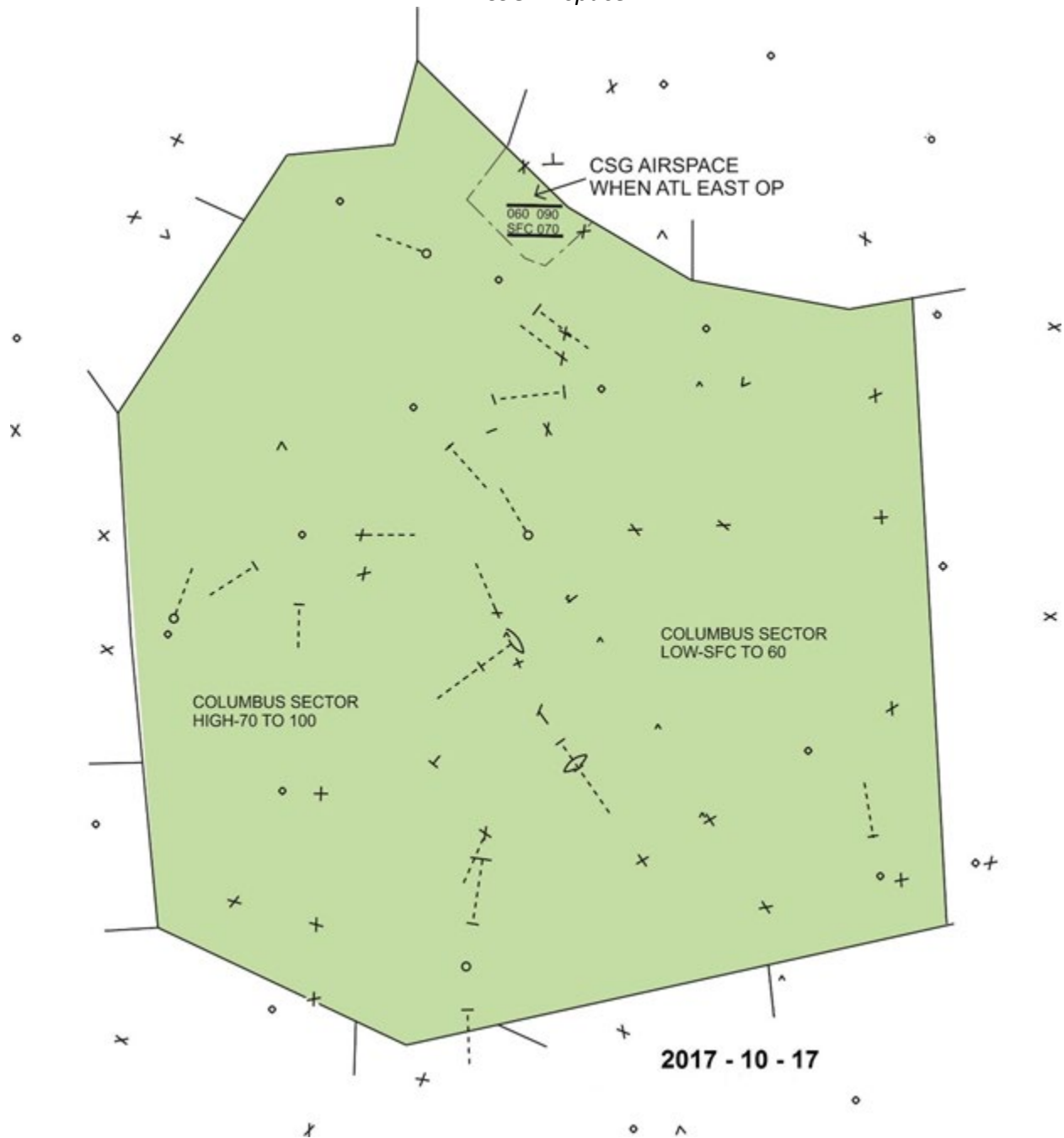
## **Section 5. Potential Problem Areas**

- a. Avoid vectoring aircraft in close proximity to AR delegated airspace ("the back of the box") to prevent a possible conflict with aircraft that cannot be contained with AR airspace.
- b. Handoff/transfer of communication to DR while the aircraft is in the airspace underlying TAR airspace may result in the aircraft remaining in Satellite airspace for an extended period of time.
- c. Failure to transfer communication to adjacent satellite/departure sectors and/or facilities in a timely manner may result in a loss of separation.
- d. When making point-outs to DR, be aware that ATL departures may be on RNAV routes that turn inside and/or outside of A80 airspace.

## Chapter 6. Columbus Sector (CSG)

### Section 1. Area of Jurisdiction

**FIG 6-1-1**  
CSG Airspace



## Section 2. Position Information

### *TBL 6-2-1*

Frequencies/Combining Positions		
CSG-Z	125.500	Base Frequency

## Section 3. Position Duties and Responsibilities

- Duties and responsibilities are IAW FAAO 7110.65, Terminal Radar Team Position Responsibilities.
- Provide approach, departure, and overflight service to aircraft operating within delegated area of jurisdiction.
- Maintain an appropriate interval on the final approach course of CSG sector airports IAW FAAO 7110.65 minima.
- Verbally coordinate with the appropriate Tower for aircraft requesting other than the designated arrival runway.
- Ensure user receipt of appropriate ATIS for aircraft landing within the CSG Sector airspace.
- Obtain a down time or cancellation on IFR traffic at airports not served by a control tower.

## Section 4. Position Standard Operating Procedures

### 6-4-1. DEPARTURES

- All turbo prop/turbo jet aircraft departing Columbus Airport must remain on runway heading until leaving 2,000 feet or two miles from the runway departure end for noise abatement.

### 6-4-2. ARRIVALS

- All VFR aircraft conducting practice instrument approaches at the Columbus Airport (CSG) or Lawson AAF (LSF), when the ATCTs are open, must be provided standard IFR separation IAW FAAO 7110.65, except 500 feet vertical separation is authorized when wake turbulence is not a factor.

### 6-4-3. HARTSFIELD ATLANTA ARRIVALS

- West Operation.
  - Props and low performance turboprops will be cleared via the ATL 233 radial or radar vectors to intercept the 233 radial at or before the TIROE intersection at 5,000 feet, with in-trail spacing. Aircraft may also be routed via V97 at 6,000 feet. CSG prop departures may be cleared direct ATL VOR at 5,000 feet.

- ii. Turbojet and high performance turboprop aircraft must be cleared to ATL via SINCA intersection and the appropriate STAR. Assign turbojets 9,000 feet. Assign turboprops 7,000 feet.
- b. East Operation.
  - i. Props and low performance turboprops will be cleared via ATL 233 radial or radar vectors to intercept the 233 radial at or before the TIROE intersection, at 5,000 feet or via V97 at 6,000 feet. CGS prop departures may be cleared direct ATL VOR at 5,000 feet.
  - ii. Turbojet and high performance turboprop aircraft must be cleared to ATL via the appropriate STAR at 8000 feet. Aircraft must be established on the STAR prior to leaving CSG airspace.
- c. Enter "NR" in the scratch pad for all turbojet aircraft NOT cleared via the RNAV STAR.
- d. In-trail spacing must be at the direction of A80 TMU.
- e. At the completion of a radar hand off, TAR/SAT must have control for turns of not more than 30 degrees.
- f. Any air file requesting landing at ATL or enroute aircraft requesting change of destination to ATL must be APREQ'd with A80 TMU prior to issuing clearance.
- g. Departures destined ATL must be APREQ'd with A80 prior to issuing departure release.

#### 6-4-4. ATLANTA AREA SATELLITE AIRPORT ARRIVALS

**NOTE** – *This section applies to CNI and GVL arrivals.*

- a. All RNAV capable aircraft requesting 10,000 feet or below landing north of V18 must be cleared via the BOKRT STAR. Turbojet and high performance turboprop at 9000 or 7000 feet. Props and low performance turboprops at 7000 or 5000 feet.
- b. All non-RNAV aircraft requesting 10,000 feet or below landing north of V18 must be cleared via the DIFFI STAR or the LGC 013 radial to intercept the RMG 172 radial to DIFFI intersection, direct destination airport. Turbojet and high performance turboprop at 9000 or 7000 feet. Props and low performance turboprops at 7000 or 5000 feet.
- c. Aircraft destined airports in SAT airspace, operating east of a line from EUF to WRGNZ, may be cleared; RNAV aircraft via direct SKYME the appropriate STAR, or Non-RNAV aircraft via radar vectors to join the MCN354 radial to the MCN354-068 DME fix direct destination airport.
- d. Aircraft landing Carrollton (CTJ), Monroe Walton County (D73) or airports south of V18 must be cleared direct destination airport at 5,000 or 7,000 feet. RNAV Aircraft landing D73 may be cleared direct SKYME the appropriate STAR. Upon completion of a RADAR handoff, SAT has control for descent.
- e. MCN Sector may clear RNAV aircraft destined airports in SAT airspace direct PINGG the BOKRT STAR, or direct LGC the DIFFI arrival, or LGC LGC013 radial to join RMG172 radial DIFFI intersection direct destination.

#### 6-4-5. ATLANTA AREA OVERFLIGHTS

- a. CSG will either route all overflights around all SAT, DEP or ARR sectors or clear overflights via T-Routes at 7,000 MSL or below.

**6-4-6. BENNING MOA**

- a. When participating inbound information is received, clear all non-participating aircraft out of the MOA to ensure inbounds are not delayed.
- b. If advance notification of participating inbound aircraft is not received and aircraft arrive unannounced, separate participating and non-participating aircraft using appropriate separation. Clear non-participating aircraft out of the MOA in the most expeditious manner.

**6-4-7. MISCELLANEOUS**

- a. MCN must have control for descent, from the CSG sector for aircraft arriving Upson Co. (OPN) and Butler (6A1) and Cordele (CKF) and Americus airports (ACJ).
- b. At the completion of a radar hand off, the MCN / A80 SAT Sectors must have control for turns of not more than 30 degrees.
- c. At the completion of a radar handoff, SAT releases control for descent for aircraft landing 7A5, LGC, PIM and 5A9 airports.
- d. Aircraft transferred from SAT via V97 will be at ODD altitudes unless otherwise coordinated.

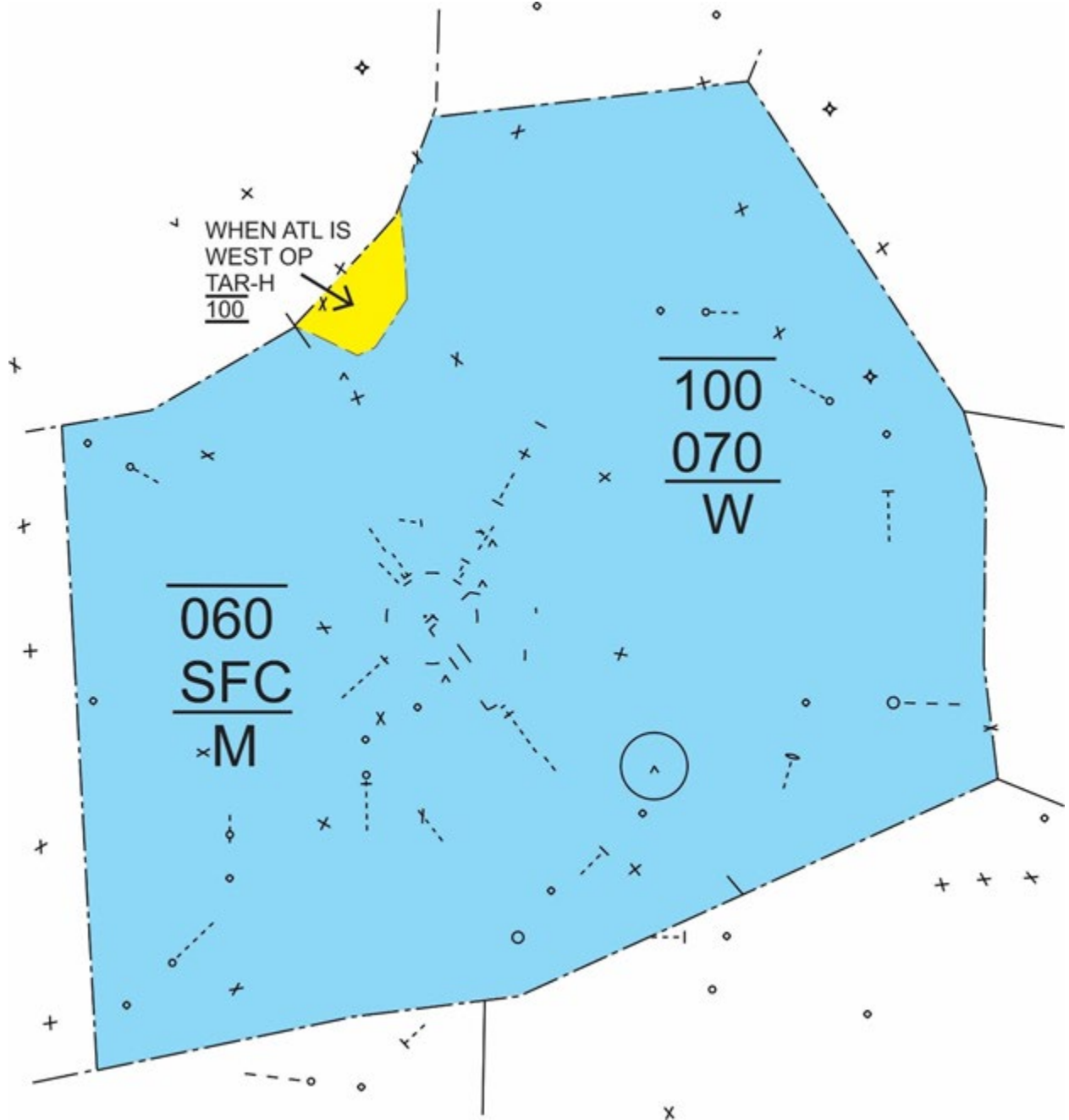
**Section 5. Potential Problem Areas**

- a. Notification and coordination with Ft. Benning and separation of participating and non-participating aircraft during use of the Benning MOA.
- b. Restricted Area R-3002 use. Controllers must be aware of area use and ensure status is updated in a timely manner.
- c. V97 traffic confliction with crossing traffic from SAT and MCN Sectors.

## Chapter 7. Macon Sector (MCN)

### Section 1. Area of Jurisdiction

**FIG 7-1-1**  
*MCN Airspace*



## Section 2. Position Information

### *TBL 7-2-1*

Frequencies/Combining Positions		
MCN-W	119.600	Base Frequency

## Section 3. Position Duties and Responsibilities

- Duties and responsibilities are IAW FAAO 7110.65, Terminal Radar Team Position Responsibilities.
- Provide approach, departure, and overflight service to aircraft operating within delegated area of jurisdiction.
- When the automation is inoperative, ensure a manual handoff on each aircraft to the appropriate facility sector.
- Ensure user receipt of appropriate ATIS for aircraft landing within the MCN Sector airspace.
- Obtain a down time or cancellation on IFR traffic at airports not served by a control tower.

## Section 4. Standard Operating Procedures

### 7-4-1. ARRIVALS

- All VFR aircraft conducting practice instrument approaches at the Middle GA Regional Airport (MCN) or Robins AFB (WRB), when the ATCTs are open, must be provided standard IFR separation IAW FAAO 7110.65, except 500 feet vertical separation is authorized when wake turbulence is not a factor.

### 7-4-2. HARTSFIELD ATLANTA ARRIVALS

- East Operation
  - Props and low performance turboprops must be cleared to ATL via the ATL 133 radial or radar vectors to intercept the 133 radial at or before the HUSKY intersection at 6,000 feet or via V97 at 6,000 feet. MCN prop departures may be cleared direct ATL VOR at 6000 feet.
  - Turbojet and high performance turboprop aircraft must be cleared to ATL via LGC VORTAC and the appropriate STAR. Assign turbojets 10,000 feet. Assign turboprops 8000 feet.
- West Operation
  - Props and low performance turboprops must be cleared to ATL via the ATL 133 radial or radar vectors to intercept the 133 radial at or before the HUSKY intersection, at 6,000 feet or via V97 at 6,000 feet. MCN prop departures may be cleared direct ATL VOR at 6000 feet.



- ii. Turbojet and high performance turboprop aircraft must be cleared to ATL via the appropriate STAR at 8000 feet. Aircraft must be vectored to intercept the STAR prior to leaving MCN sector airspace.
- c. Enter "NR" in the scratch pad for all turbojet aircraft NOT cleared via the RNAV STAR.
- d. In-trail spacing must be at the direction of A80 TMU.
- e. At the completion of a radar hand off, TAR must have control for turns of not more than 30 degrees.
- f. Any air-file requesting landing at ATL or enroute aircraft requesting change of destination to ATL must be aPreq'd with A80 TMU prior to issuing clearance.
- g. Departures destined ATL must be APREQ'd with A80 TMU prior to issuing departure release.

### 7-4-3. ATLANTA AREA SATELLITE AIRPORT ARRIVALS

**NOTE** – *This paragraph applies to CNI arrivals.*

- a. All Non-RNAV aircraft landing north of V18, operating at 10,000 feet or below must be cleared via the MCN354 radial to the MCN354068 DME fix, direct destination airport. Turbojets and high performance turboprops at 8000 or 6000 feet. Props and low performance turboprops at 6000 or 4000 feet.
- b. All RNAV equipped aircraft landing north of V18, operating at 10,000 feet or below, must be cleared via the appropriate STAR. Turbojets and high performance turboprops at 8000 or 6000 feet. Props and low performance turboprops at 6000 or 4000 feet. Aircraft may be cleared direct WRGNZ so as to remain clear of TAR airspace.
- c. Aircraft destined airports in SAT NW quadrant, operating west of a line from MCN to BOKRT, may be cleared; RNAV aircraft via direct PINGG the BOKRT STAR, or Non-RNAV aircraft via direct LGC VORTAC DIFFI STAR, or LGC LGC013 radial to intercept the RMG172 radial to DIFFI intersection, direct destination airport.
- d. Aircraft landing Carrollton (CTJ), Monroe Walton County (D73) or airports south of V18 must be cleared direct destination airport at 4,000 or 6,000 feet. RNAV Aircraft landing D73 may be cleared direct SKYME the appropriate STAR. Upon completion of a RADAR handoff SAT has control for descent.
- e. CSG Sector may clear aircraft destined airports in SAT NE quadrant airspace via direct SKYME the appropriate STAR, or via radar vectors to join the MCN354 radial to the MCN354-068 DME fix direct destination.

### 7-4-4. MISCELLANEOUS

- a. **Atlanta Area Overflights:** MCN will either route all overflights around all SAT, DEP or ARR sectors or clear overflights via TEE Routes at 7,000 MSL or below. With prior approval, RNAV equipped aircraft may be cleared through the Atlanta area via direct LOGEN intersection, direct NELLO intersection, direct next filed fix, at 6,000 feet. Aircraft must enter SAT east of Husky intersection when ATL is on an East Operation or enter east of CANUK when ATL is on a West Operation.

- b. SAT releases control for descent for aircraft landing Upson County (OPN) airport, and Turbojets that are at 10,000 feet landing Middle Georgia Regional (MCN). MCN shall remain clear of ARR airspace or accomplish a point out.
- c. CSG releases control for descent for aircraft landing Upson County (OPN), Butler (6A1), Americus (ACJ), and Cordele (CKF) airports.
- d. At the completion of a radar hand off, the CSG / ATHENS / A80 SAT Sectors must have control for turns of not more than 30 degrees.

#### **7-4-5. A80 ATHENS SECTOR ARRIVALS/OVERFLIGHTS**

- a. Aircraft must be established on the route indicated on the current FPS at correct altitude for direction of flight.

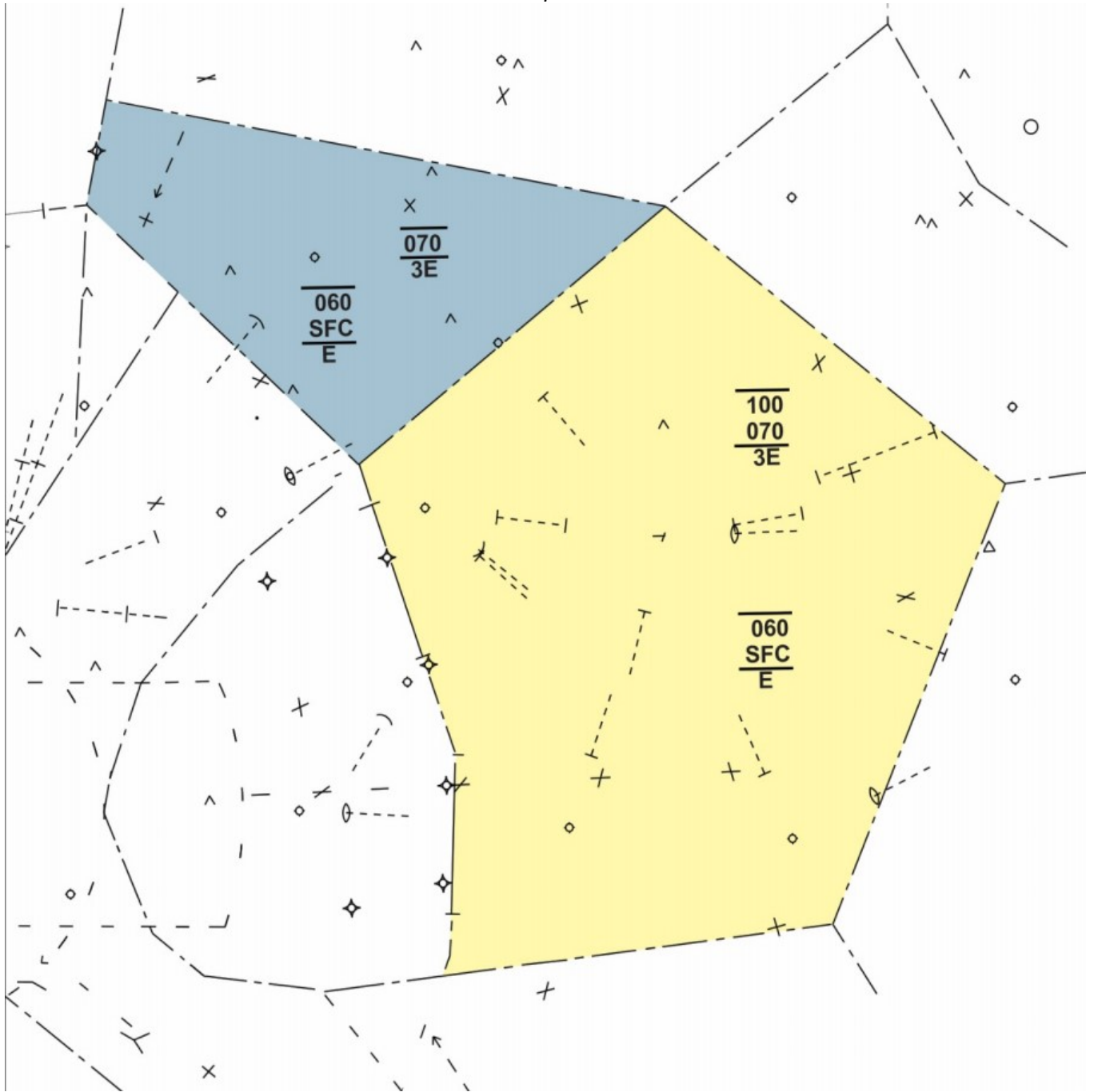
### **Section 5. Potential Problem Areas**

- a. High performance aircraft and high altitude approaches to WRB AFB require extra coordination.
- b. Proximity of Middle Ga. Regional Airport and Robins AFB require diligent and extensive coordination for safe and efficient traffic flow.
- c. Address RADAR handoffs to the specific Atlanta and Jacksonville CENTER to ensure the correct Center receives the RADAR handoff.

## Chapter 8. ATHENS Sector (AHN)

### Section 1. Area of Jurisdiction

**FIG 8-1-1**  
*AHN Airspace*



## Section 2. Position Information

### *TBL 8-2-1*

Frequencies/Combining Positions		
AHN-E	132.470	Base Frequency

## Section 3. Position Duties and Responsibilities

- Duties and responsibilities are IAW FAAO 7110.65, Terminal Radar Team Position Responsibilities.
- Provide approach, departure, and overflight service to aircraft operating within delegated area of jurisdiction.
- Ensure user receipt of appropriate Automated Weather Information for aircraft landing within the AHN Sector airspace.
- Issue the AHN altimeter to all aircraft overflying the AHN Sector airspace.
- Establish in-trail sequence for turboprop/jet aircraft landing Atlanta or Atlanta satellite airports.
- Obtain a down time or cancellation on IFR traffic at airports not served by a control tower.

## Section 4. Position Standard Operating Procedures

### 8-4-1. ARRIVALS

- All VFR aircraft conducting practice instrument approaches at the Athens/Ben Epps Airport (AHN), when the ATCT is open, must be provided standard IFR separation IAW FAAO 7110.65, except 500 feet vertical separation is authorized when wake turbulence is not a factor.

### 8-4-2. ATL ARRIVALS

- Aircraft landing ATL must be cleared V-325 LOGEN direct ATL at 6,000 feet.
- Aircraft landing ATL must be handed off to SAT and must display ATL in the scratch pad.
- At the completion of a radar hand off, the A80 Atlanta Satellite Sector must have control for turns of not more than 30 degrees.
- Prior to issuing a clearance to ATL, obtain a release or delay time, as appropriate, through A80 TMU.

**NOTE** – *This would include uncontrolled airports, air files, change of destinations and VFRs.*

### 8-4-3. A80 ATLANTA SATELLITE SECTOR ARRIVALS

**NOTE** – Aircraft cleared via the DEHAN Arrival IAW the A80/ZTL LOA need not be re-cleared IAW the provisions of this paragraph.

- a. Aircraft landing north of V18, requesting 10,000 feet or below must be cleared via V-325 WOMAC direct destination airport, at 6,000 feet.
- b. Turbojet and high performance turbo prop aircraft landing south of V18, requesting 10,000 feet or below, must be cleared via the MADDI intersection direct HUSKY intersection direct destination airport, at or descending to 6,000 feet.
- c. Props and low performance turboprops landing south of V18 must be cleared via the MADDI intersection direct HUSKY intersection direct destination airport, at or descending to 4,000 feet. Carrollton (CTJ) arrivals may also use this route.
- d. Aircraft landing LZU must be cleared direct LZU or established on the localizer at 4,000 feet. A80 Atlanta Satellite Sector must have control for descent.
- e. At the completion of a radar handoff, the A80 Atlanta Satellite Sector must have control for turns of not more than 30 degrees.

### 8-4-4. ATLANTA SECTOR OVERFLIGHTS

- a. Must be cleared via the TEE Routes at or below 7,000 feet, OR
- b. APREQ on an individual basis, OR
- c. Routed around A80 Atlanta Sector airspace via V5 NELLO or V20 GRANT.

### 8-4-5. A80 MACON SECTOR ARRIVALS/OVERFLIGHTS

- a. Aircraft must be established on the route indicated on the current FPS at correct altitude for direction of flight.
- b. At the completion of a radar hand off, the A80 Macon Sector must have control for turns of not more than 30 degrees.
- c. When advised by A80 Macon Sector that the BULLDOG MOA is hot, aircraft on direct routes southeast bound at or below 10,000 feet that will penetrate the BULLDOG MOA must be rerouted over Dublin VORTAC (DBN) or Colliers VORTAC (IRQ).

### 8-4-6. COORDINATION BETWEEN SAT AND AHN

- a. Aircraft departing LZU, D73, CVC, WDR and GVL filed at 10,000 feet or below may be assigned headings which will take the aircraft into adjacent sector's airspace. These aircraft may be assigned the adjacent sector's frequency as the initial departure control frequency. When initial contact will be made with the adjacent sector, modify the Data Block to the receiving sector's position symbol. When these aircraft are released, the receiving sector controller has control for climb.
- b. AHN has control for descent for aircraft landing Gainesville (GVL) and Winder (WDR) airports.
- c. Aircraft entering AHN must be cleared on course at odd altitudes 9,000 feet and below. AHN must have control for descent for aircraft landing GVL and WDR airports. AHN must remain clear of ARR airspace or accomplish a point out.

## **Section 5. Potential Problem Areas**

- a. Non Radar holding pattern protected airspace for missed approaches may encroach on the protected airspace of other airports and affect operations at those airports.
- b. IR Routes are in close proximity to airports and may conflict with departures or published instrument approaches.
- c. Numerous airports are in close proximity to adjacent airspace. When issuing IFR clearance off of these airports, coordination may be required with adjacent facilities/sectors.

## **Appendix 1. Waiver 09-T-090: Simultaneous Visual Approaches to 9R/27L with 10/28**

### **AFFECTED DIRECTIVE(S):**

1. FAA Order JO 7110.65, paragraph 7-4-4c2, Approaches to Multiple Runways.
2. FAA Order JO 7110.65, paragraph 7-4-4c3, Approaches to Multiple Runways.

### **OPERATION(S) AUTHORIZED:**

This waiver authorizes A80 TRACON personnel to conduct simultaneous visual approaches or simultaneous visual/instrument approaches to Runways 9R/27L and Runway 10/28 with centerlines separated by 4,200 feet at Hartsfield-Jackson Atlanta International Airport (ATL).

### **SPECIAL PROVISIONS, CONDITIONS AND LIMITATIONS:**

- a. The provisions of FAA Order JO 7110.65, paragraph 7-4-4c2 are waived.
- b. When conducting simultaneous visual approaches or simultaneous visual/instrument approaches to Runway 9R/27L and Runway 10/28 with centerlines separated by 4,200 feet, A80 must comply with the provisions of FAA Order JO 7110.65, paragraph 7-4-4c3. This waiver is issued on the basis that these procedures continue to provide an equivalent level of safety and ensure the safe and efficient control of aircraft.
- c. A80 must ensure aircraft on vectors for visual approach do not exceed 210 knots during final approach course turn on.

**NOTE** – *the only difference in rules between 7110.65 paragraph 7-4-4c2 (runways separated by 2,500 to less than 4,300ft) versus 7-4-4c3 (runways separated by 4,300ft or more) is that c2 requires that both aircraft be issued a visual approach clearance or one be issued a visual approach clearance and the other another type of approach clearance, with both established on a 30 degree intercept, before normal separation can cease. On the other hand, c3 only requires one aircraft to be issued a visual approach clearance and the other does not need to have any approach clearance before normal separation can cease, as long as both are assigned (not inherently established) on the 30 degree intercept. All other provisions (e.g. flight paths do not intersect) are shared between c2 and c3. This waiver authorizes A80 to conduct visual approaches to 10/28 and 9R/27L with the rule set as if they were 4,300ft or more apart, when they would normally fall under the 2,500 to less than 4,300ft rule set.*

## **Appendix 2. FAA JO 7110.126A: Consolidated Wake Turbulence Separation Standards (RECAT)**

A80 is authorized to use the amended wake turbulence separation rules (the latest "RECAT" or "CWT" rules) in accordance with 7110.65 amendment 7110.126A.

Utilization of RECAT is recommended, but not mandatory.

### **1 AIRCRAFT WAKE CATEGORIES**

For the purposes of Wake Turbulence Separation Minima, aircraft are categorized as Category A through Category I in accordance with TBL 1.

Category A	A388
Category B	Pairwise Upper Heavy aircraft
Category C	Pairwise Lower Heavy aircraft
Category D	Non-Pairwise Heavy aircraft
Category E	B757 aircraft
Category F	Upper Large aircraft excluding B757 aircraft
Category G	Lower Large aircraft
Category H	Upper Small aircraft with a maximum takeoff weight of more than 15,400 pounds up to 41,000 pounds
Category I	Lower Small aircraft with a maximum takeoff weight of 15,400 pounds or less.



**TBL 1-1***Aircraft Types Categorized*

**NOTE** — This table is not all-encompassing. For a complete list, see the CWT category listed in [FAA JO 7360.1E](#).

<b>A</b> <b>A380</b>	<b>B</b> <b>Upper Heavy</b>	<b>C</b> <b>Lower Heavy</b>	<b>D</b> <b>Non-Pairwise Heavy</b>		<b>E</b> <b>B757</b>	<b>F</b> <b>Upper Large</b>		<b>G</b> <b>Lower Large</b>		<b>H</b> <b>Upper Small</b>	<b>I</b> <b>Lower Small</b>
A388	A332	A306	A124	DC85	B752	A318	C130	AT43	E170	ASTR	BE10
	A333	A30B	A339	DC86	B753	A319	C30J	AT72	E45X	B190	BE20
	A343	A310	A342	DC87		A320	CVLT	CL60	E75L	BE40	BE58
	A345	B762	A3ST	E3CF		A321	DC93	CRJ1	E75S	B350	BE99
	A346	B763	A400	E3TF		B712	DC95	CRJ2	F16	C560	C208
	A359	B764	A50	E6		B721	DH8D	CRJ7	F18H	C56X	C210
	B742	C17	AN22	E767		B722	E190	CRJ9	F18S	C680	C25A
	B744	DC10	B1	IL62		B732	GL5T	CRJX	F900	C750	C25B
	B748	K35R	B2	IL76		B733	GLEK	DC91	FA7X	CL30	C402
	B772	MD11	B52	IL86		B734	GLF5	DH8A	GLF2	E120	C441
	B773		B703	IL96		B735	GLF6	DH8B	GLF3	F2TH	C525
	B77L		B741	K35E		B736	MD82	DH8C	GLF4	FA50	C550
	B77W		B743	KE3		B737	MD83	E135	SB20	GALX	P180
	B788		B84D	L101		B738	MD87	E145	SF34	H25B	PAY2
	B789		B74R	MYA4		B739	MD88			LJ31	PA31
	C5		B74S	R135			MD90			LJ35	PC12
	C5M		B78X	T144						LJ45	SR22
			BLCF	T160						LJ55	SW3
			BSCA	TU95						LJ60	
			C135	VMT						SH36	
			C141							SW4	

## 2 WORDS AND PHRASES

- a. The word Super must be used as part of the identification in all communications with or about Category A aircraft.
- b. The word Heavy must be used as part of the identification in all communications with or about Category B, C, or D aircraft.

## 3 DEPARTURE SAME/PARALLEL RUNWAY SEPARATION

*Radar minima may be used in lieu of time-based minima for full length departures and intersection departures separated by 500ft or less.*

**TBL 3-1**

In Front	Behind	Time
<ul style="list-style-type: none"><li>Same runway or parallels separated by less than 2,500ft</li><li>Parallels separated by 2,500ft or more when projected flight paths will cross</li></ul>		
A	B/C/D/E/F/G/H/I	3 minutes
B/D	B/C/D/E/F/G/H/I	2 minutes
C	E/F/G/H/I	
<ul style="list-style-type: none"><li>Same runway or parallels separated by less than 700ft or any if flight paths will cross</li></ul>		
E	I	2 minutes
<ul style="list-style-type: none"><li>Runway with displaced landing threshold if flight paths will cross when departure follows arrival or arrival follows departure</li></ul>		
A	B/C/D/E/F/G/H/I	3 minutes
B/D	B/C/D/E/F/G/H/I	2 minutes
C	E/F/G/H/I	
E	I	

## 4 INTERSECTION DEPARTURE SAME/PARALLEL RUNWAY SEPARATION

**TBL 4-1**

In Front	Behind	Time
----------	--------	------

<ul style="list-style-type: none"> <li>Same runway</li> </ul>		
H/F/G	I	3 minutes
<ul style="list-style-type: none"> <li>Same runway or parallels separated by less than 700ft</li> <li>Parallels separated by 700ft or more if flight paths will cross and the thresholds are offset by 500ft or more</li> </ul>		
E	I	3 minutes
<ul style="list-style-type: none"> <li>Same runway or parallels separated by less than 2,500ft</li> <li><i>Parallels separated by less than 2,500ft with thresholds offset by 500ft or more counts as an intersection departure for this section</i></li> </ul>		
A	B/C/D/E/F/G/H/I	4 minutes
B/D	B/C/D/E/F/G/H/I	3 minutes
C	E/F/G/H/I	

Same runway I behind H/F/G separation may be waived by the I category pilot.

## 5 INTERSECTING RUNWAY/FLIGHT PATH & NONINTERSECTING CONVERGING RUNWAY SEPARATION

**TBL 5-1**

<ul style="list-style-type: none"> <li>Departing behind landing or departing aircraft on intersecting or converging runway if flight paths will cross</li> <li>Landing behind departing aircraft on crossing runway if arrival will cross flight path (<i>may use radar separation</i>)</li> </ul>		
A	B/C/D/E/F/G/H/I	3 minutes
B/D	B/C/D/E/F/G/H/I	2 minutes
C	E/F/G/H/I	
E	I	

## 6 RADAR MINIMA

Separate aircraft by the minima specified in TBL 6-1 in accordance with the following:

- a. When operating within 2,500ft and less than 1,000ft below the flight path of the leading aircraft over the surface of the earth of a Category A, B, C, or D aircraft.
- b. When operating within 2,500ft and less than 500ft below the flight path of the leading aircraft over the surface of the earth of a Category E aircraft.
- c. When departing parallel runways separated by less than 2,500ft, the 2,500ft requirement in subparagraph 2 is not required when a Category I aircraft departs the parallel runway behind a Category E aircraft. Issue a wake turbulence cautionary advisory and instructions that will establish lateral separation in accordance with subpara 2. Do not issue instructions that will allow the Category I aircraft to pass behind the Category E aircraft.

**NOTE –**

*The application of 7110.65 5–8–3, Successive or Simultaneous Departures, satisfies this requirement.*

*Consider runways separated by less than 700 feet as a single runway because of the possible effects of wake turbulence.*

**TBL 6-1**

	Follower								
	A	B	C	D	E	F	G	H	I
<b>A</b>		4.5	6		7				8
<b>B</b>		3	4		5				5 (6)
<b>C</b>					3.5		5		
<b>D</b>		3	4		5		5 (6)		
<b>E</b>									4
<b>F</b>									(4)

**NOTE –**

*The leading (in front) aircraft is listed on the left.*

*All values are in nautical miles.*

*The values in parentheses are only applicable for two aircraft on approach and such separation must exist by the time the aircraft in front is over the landing threshold.*

## Appendix 3. Abbreviations/Acronyms/Identifiers

Abbreviation	Meaning	Abbreviation	Meaning
A80	Atlanta Large TRACON	CAT	Category of ILS
AAR	Airport Arrival Rate or Adapted Arrival Route	CBI	Computer Based Instruction
ACD	ARTS Color Display	CC	Cab Coordinator
ADAR	Adapted Departure and Arrival Route	CDR	Coded Department Routes
ADR	Airport Departure Rate or Adapted Departure Route	CI-APP	Coordinator-Approach
ADS-B	Automatic Dependent Surveillance Broadcast	CI-DEP	Coordinator-Departure
AHN	Athens airport/VORTAC	CI-SAT	Coordinator-Satellite Sector
AIT	Automated Information Transfer	CI-AHN	Coordinator-ATHENS Sector
ALS	Approach Lighting System	CI-MCN	Coordinator-Columbus / Macon Sectors
AMASS	Airport Movement Area Safety System	CI-MON	Coordinator Final Monitors
APP	Approach Sector (inc. TAR/AR)	CIC	Controller-in-Charge
APREQ	Approval Request	CPC	Certified Professional Controller
AR	Arrival Radar Position	CTRD	Certified Tower Radar Display
ARFF	Air Rescue & Fire Fighting Equipment	CWA	Center weather Advisory
ARMT	Airport Resource Management Tool	DALR	Digital Audio Legal Recorder
ARSR	Air Route Surveillance Radar	DASI	Digital Altimeter Setting Indicator
ARTCC	Air Route Traffic Control Center	DCB	Display Control Bar
ARTS	Automated Radar Terminal System	DCP	Display Control Panel
ASDE	Airport Surface Detection Equipment	DOA	Department of aviation (Atlanta Airport)
ATCSCC	Air Traffic Control System Command Center	DR	Departure Radar Position
ATCT	Airport Traffic Control tower	DTA	Departure Transition Area
ATHENS	ATHENS Sector	ECS	Emergency Communications System
ATIS	Automated Terminal Information Service	EDCT	Estimated Departure Clearance Time
ATL	Atlanta Airport / Atlanta VORTAC Identifier	EDI	External Data Interface
ATPA	Automated Terminal Proximity Alert	EFSL	Emergency Full Service Level
AWOS	Automatic Weather Observing System	EFSTS	Electronic Flight Strip Transfer System

Abbreviation	Meaning	Abbreviation	Meaning
ESL	Emergency Service Level	LMFSS	Lockheed Martin Flight Service Station
ESP	En Route Spacing Programs	LOA	Letter of Agreement
ETA	Estimated Time of Arrival	LZU	Gwinnett County Airport
ETSA	Eastern Terminal Service Area	MBA	Microburst Alert
FAA	Federal Aviation Administration	MALS	Medium Intensity APPROACH Lighting System
FAAO	Federal Aviation Administration Order (Reference is always to current version of the Order)	MALS/RAIL	MALS with Runway Alignment Indicator Lights
FAC	Final Approach Course	MANPADS	Man-Portable Air Defense System
FAX	Facsimile	MCN	Macon Sector / Tower / Airport
FDC	Flight Data Center	MGE	Dobbins Air Reserve Base
FDIO	Flight Data Input/Output	MGM	Montgomery ARSR / Airport
FMS	Flight Management System	MIS	Meteorological Impact Statement
FRC	Full Route Clearance	MM	Middle Marker
FSL	Full Service Level	MON	Final Radar Monitor
FSS	Flight Service Station	MSAW	Minimum Safe Altitude Warning System
FTD	Full Triple Departures	MVA	Minimum Vectoring Altitude
FTY	Fulton County/Brown Field Airport	NAS	National Airspace System
FWD	RDVS Call Forward Command	NAVAID	Navigational Aid
GC	Ground Control	NAV/COM	Navigation/Communications
GI	General Information Message	NFF	No Flight Following
HIWAS	Hazardous In-Flight Weather Advisory Service	NOM	NAS Operations Manager
IAW	In Accordance With	NOTAM	Notice to Airmen
IBI	Interim Beacon Interrogator	OJT	On The Job Training
IDS	Information Display System	OM	Operations Manager
ILS	Instrument Landing System	OS	Operational Supervisor
LA	Low Approach	PDAR	Preferential Departure/Arrival Route
LA/CA	Low Altitude Alert/Conflict Alert	PDC	Pre-departure Clearance
LC	Local Control	PDK	DeKalb- Peachtree Airport
LLWAS	Low Level Wind Shear Alert System	PDR	Preferential Departure Route

Abbreviation	Meaning	Abbreviation	Meaning
PIREP	Pilot Report	TAR	Terminal Arrival Radar Position
PRM	Precision Runway Monitor	TDW	Tower Display Workstation
QHN	Ashburn ARSR	TDWR	Terminal Doppler Weather Radar
RACD	Remote ARTS Color Display	TCW	Terminal Controller Workstation
RAIL	Runway Alignment Indicator Lights	Tech Ops	Technical Operations
RB	Relief Briefing Button on the RDVS	TED	Touch Entry Display
RDVS	Rapid Deployment Voice Switch	TM	Traffic Management
RFC	Radar Final Control	TMC	Traffic Management Coordinator
RGW	Radar Gateway	TMO	Traffic Management Officer
RMG	ZTL Rome Sector/Rome Airport	TOC	Technical Operations Center
RNAV	Area Navigation	TRACON	Terminal Radar Approach Control
ROC	Regional Operations Center	UHF	Ultra High Frequency
RTCW	Remote Terminal Controller Workstation	V18, V97	Victor (Low Altitude) Airways
RVR	Runway Visual Range	VA	Visual Approach
RWY	Runway	VFR	Visual Flight Rules
RYY	Cobb County/McCollum Airport	VR	Visual Approach with Radar Separation
SAT	Atlanta Satellite Sector	VS	Visual Separation
SFC	Surface	VSBP	Voice Switch By-Pass
SFL	Sequence Flashing Lights	WIN	Windy Hill ARSR
SIGMET	Significant Meteorological Information	WRB	Robins AFB
SIA	Status Information Area	WSA	Wind Shear Alert
SID	Standard Instrument Departure	ZJX	Jacksonville Air Route Traffic Control Center
SIAP	Simultaneous Instrument Approaches	ZTL	Atlanta Air Route Traffic Control Center
SMA	Surface Movement Advisory		
SSA	Status Systems Area		
STAR	Standard Terminal Arrival		
STARS	Standard Terminal Automation Replacement System		
STIAPS	Simultaneous Triple Instrument Approaches		